



Native Plant Society of Oregon

Dedicated to the enjoyment, conservation, and study of
Oregon's native plants and habitats

Bulletin

August/September 2025 Volume 58, No.7



Pink mountain heather (*Phyllodoce empetrifomis*) on glacial outwash plain at base of
Three-Fingered Jack, Mt. Jefferson Wilderness. Jefferson County, Oregon.

August 11, 2008. Photo by Gerald D. Carr, Courtesy of OregonFlora.

Table of Contents

- [- Join the Native Plant Appreciation Month Committee](#)
- [- Conservation Committee Report](#)
- [- Calling Writers, Editors, and Creatives- Get Involved with NPSO Publications!](#)
- [- OregonFlora](#)
- [- Photo Gallery](#)
- [- Oregon Mystery Plant](#)
- [- Call for Nominations for 2026 Fellow Awards](#)
- [- Come Visit the Portland State University Herbarium and Rae Selling Berry Seed Bank!](#)
- [- The Vine](#)
- [- Chapter Notes](#)

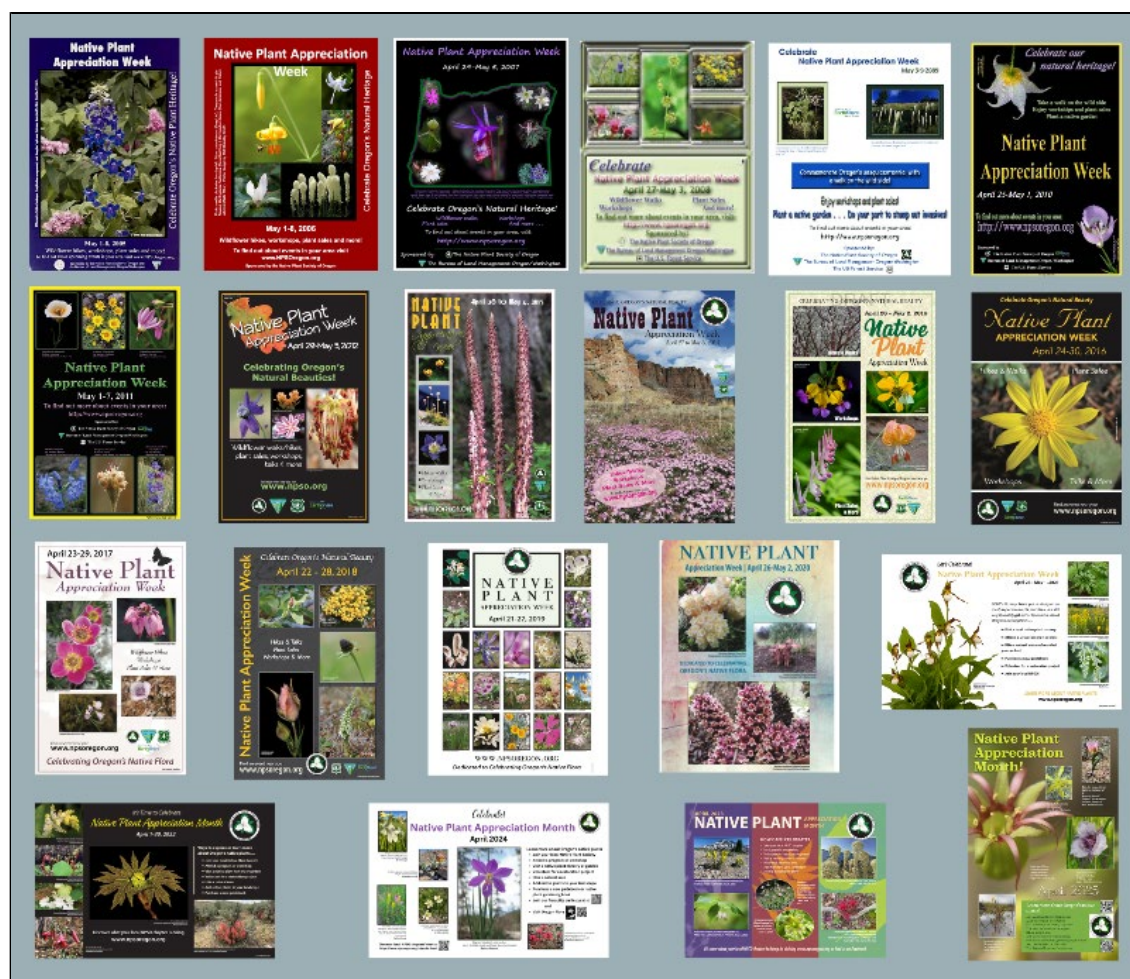
~~~~~

If you have any questions, please contact us at [bulletin@npsoregon.org](mailto:bulletin@npsoregon.org).

~~~~~

For membership inquiries, contact Rachel Werling, the Membership Chair, by [email](#), or send mail to P.O. Box 902, Eugene, OR 97440

Join the Native Plant Appreciation Month Committee



We need you! Now that April is permanently Native Plant Appreciation Month in Oregon, the Native Plant Appreciation Month Committee could use more members to expand our reach. Native Plant Appreciation Month is already NPSO's largest coordinated across-the-state education and outreach event. While the workload on this committee has historically been light, with more members we could have a greater effect and spread the celebration of Native Plant Appreciation.

Why do we need new members?

- First, we need a new poster designer, preferably someone with graphic design experience and a love of native plants. We solicit photographs as summer ebbs and set a submission deadline near the end of the year (at the designer's preference). We would like to have a completed poster by mid-February so we can have it printed and distributed in March (assuming we are again funded for a printed poster).
- Second, we need committee members to help craft this year's poster photo contest and to review the submission guidelines, submitted photos, and poster designs.
- Third, committee members can help spread the reach of Native Plant Appreciation

Month by encouraging organizations (public and private) to join in the celebration. Members can also publicize activities around the state (such as plant sales, plant walks, iNaturalist florablitzes, workshops, and similar events). This might include writing articles for the NPSO *Bulletin*, creating press releases, and directly contacting related organizations.

Quite honestly, except for the designer position, this committee requires very little time, but it has the potential for enormous public impact. We'll probably meet online a couple of times this fall and a couple more times between January and April. Join us to help fulfill NPSO's basic mission of public education for the enjoyment, conservation, and study of native plants and habitats. To join or just get more information, email judi.sanders@gmail.com. - Judi Sanders

Conservation Committee Report

The Conservation Committee (i.e. its chairman) has been watching the destructive storm of executive orders (EO) and legislative initiatives that is making the future of forests almost too painful to contemplate. Many of the proposals faced organized resistance while others have been temporarily slowed by the courts. None of them, however, has been withdrawn or completely defeated. They pile up, going into effect at various times, like fireworks igniting during a fire at the fireworks factory, exploding and scattering sparks everywhere.

NPSO members who are following the actions could be feeling a bit confused by all the information. Members who know where to find the original documents or the interpretation of those documents by one party or the other, can get a pretty clear picture of the disaster as it unfolds. Others might want a little help.

The Conservation Committee will report on the status of executive and legislative activities monthly in the *Bulletin*. Some of the stories will contain links to original documents or the summaries provided by other non-profit environmental organizations. If you would like to receive more information about one or more of the stories in the *Bulletin*, including notices of organized resistance, please let me know by sending me an email (dickodonnell@Tearthlink.net) requesting additional information. I will send you the long form of this Conservation Committee report if you request it.

Breaking News

Some of you might be aware that in early July over a dozen federal agencies issued

interim final rules announcing sweeping and major changes and rollbacks to their National Environmental Policy Act (NEPA) procedures. While each of the proposals is different, several things are clear - agencies are eliminating any reference to climate change or environmental justice in their reviews, and there seems to be a concerted effort to limit or eliminate opportunities for transparency and meaningful public input.

The list of departments/agencies revising their NEPA procedures includes: Department of Interior, Department of Transportation, Department of Agriculture, Forest Service, Army Corps of Engineers, Department of Energy, Department of Commerce, National Oceanic Atmospheric Administration, and more. Not only are all of these agencies issuing new and different regulations, they are also providing only thirty days of public comment - in most cases having a deadline of August 4, 2025, which is right around the corner. In light of the enormous challenge of providing detailed comments on each of these agencies' individual NEPA procedures, several environmental organizations put together a relatively short, high level comment letter detailing problems identified with all of these revisions.

Getting Rid Of “Harm”

The U.S. Fish and Wildlife Service and National Marine Fisheries Service proposed a rule (FWS-HQ-ES-2025-0034) to rescind the regulatory definition of “harm” in the Endangered Species Act (ESA) regulations. The proposed rule would rescind the regulatory definition of ‘harm,’ defined as any significant habitat modification or degradation that kills or injures wildlife and is an attempt at rescinding widespread habitat protections for species protected under the ESA.

The Department of the Interior has released [a draft strategic plan](#) that, among other things, proposes tracking the removal of species from ESA protections as a key metric of success.

And it would be an indication of success if removal from the list meant that the species in question was safe; but it means something quite different - it means removed despite its peril or because it has become extinct. This “metric of success” is an example of the cynical sneering mockery that departments of the current federal government indulge all too frequently.

Trump’s Budget Bill

Congress recently passed Trump’s Budget Bill. Fortunately, one of its most problematic provisions as regards forests and native plants was removed from the final bill. The provision originally called for the privatization of millions of acres of Forest Service and

Bureau of Land Management lands. But hundreds of thousands of Americans across the country spoke out against selling millions of acres of public lands to fund tax breaks for the wealthy. In response to this overwhelming grassroots pressure, Senator Mike Lee of Utah withdrew his proposal from the bill.

“Fix Our Forests” Act

The deceptively named “Fix our Forests” act hurried through Congress and passed last month. Its provisions for logging in old growth timber have been promoted as a solution to wildfires but in fact the proposed solution would make wildfires worse by removing the most fire-resistant trees. Opposition to it is widespread. A letter co-signed by a number of environmental non-profits can be obtained from dickodonnell@earthlink.net.

Wetlands Lose Federal Protection

Wetlands throughout the United States, as they have been defined and recognized for decades, have lost federal protection and are in danger of being filled in if the states do not step in with protective regulation or legislation.

The Supreme Court’s 2022 decision in Sackett vs. Environmental Protection Agency, redefines wetlands such that a large number of wetlands that were formerly protected under the Clean Water Act are no longer protected.

The Northwest Forest Plan Amendment

Since NPSO filed comments there has been no news.

A Victory

Oregon Natural Desert Association [secured a key victory in court last week](#) upholding science-based management of wildlife and their habitat across Oregon's high desert. The court agreed with Oregon Natural Desert Association that the Trump administration must maintain a network of important sagebrush habitat research areas established a decade ago to support robust, evidence-based research on how livestock grazing affects sage-grouse and sagebrush grasslands. The lower court’s ruling will probably be appealed to the Supreme Court.

Roadless Areas Under the Forest Service

The administration’s entire press release can be found at the link below so you can see for yourselves the absurd reasons they give for this destructive act.

[Secretary Rollins Rescinds Roadless Rule, Eliminating Impediment to Responsible Forest Management | Home](#)

Note in the press release that the Secretary of Agriculture characterized the prohibition of roads and logging (timber harvest) as over-restrictive and contrary to reducing wildfire risk. This theme runs through Trump’s forestry policy: increasing logging and roads will reduce wildfire risk. But it is clear to forestry experts that getting rid of the Roadless Rule “is not about fire protection; it’s about logging.” They point out that if the Trump administration were serious about mitigating wildfire risk, it would make more sense to increase Forest Service funding and personnel, and, critically, to conduct tree-thinning and prescribed burns in areas that already have roads. (Grist Magazine - dedicated to reporting on climate change).

The Blue Mountain Forest Plan Revision

Postponed three times since 2024, the Blue Mountains Forest Plan Revision process resumed on July 2, 2025, with the publication of dates and locations of a series of informational public meetings throughout the region. The Notice of Intent (NOI) to prepare an environmental impact statement will be published in the Federal Register soon. The Forest Service will release a draft Land Management Plan addressing the need to change from the [1990 Land Management Plans](#). The public will have sixty days to file comments on the NOI with a 300-page limit on comments. The NOI will initiate a formal scoping period for the public to review the materials and provide input.

State Of Oregon Legislation - HB 3103 - In Progress

This proposed legislation is sponsored by the logging industry. It builds on Trump’s logging Executive Orders. HB 3103 would fundamentally change the way the state forests are managed. It would require the Oregon Department of Forestry to establish a harvest level that prioritizes logging over habitat, clean water, fish and wildlife, and recreation. This would preempt all other plans, policies or directives made by the Board of Forestry. These include policies protecting fish and wildlife habitat, clean water and recreation.

HB 3103 prevents the Oregon Department of Forestry from implementing its Climate Change and Carbon Plan. In 2021, the Board of Forestry adopted a Climate Change and Carbon Plan for state forests with the goal of establishing Oregon as a national leader in climate-smart forestry. HB 3103 requires a rule establishing ten-year harvest levels that would preempt the Climate Change and Carbon Plan, which is not adopted as a rule.

HB 3103 undermines the State Forest Habitat Conservation Plan which provides balanced protection for seventeen species of salmon and wildlife that are listed under the federal ESA.

Imitating the Trump team, the sponsors of this bill insist that there is an emergency compelling its passage: “This 2025 Act being necessary for the immediate preservation of the public peace, health and safety, an emergency is declared to exist, and this 2025 Act takes effect on its passage.”

A provision of the EO “Empowering Commonsense Wildfire Prevention and Response” (June 2025) locks in two other EOs: “(ii) promote the use of a risk-informed approach, as consistent with Executive Order 14239 of March 18, 2025 (Achieving Efficiency Through State and Local Preparedness), to develop new policies that remove barriers to preventing and responding to wildfires, including through year-round response readiness, better forest health, and activities outlined in EO 14225 of March 1, 2025 (Immediate Expansion of American Timber Production).”

Removal Of NEPA Implementing Regulations

This interim final rule removes the Council on Environmental Quality regulations implementing the NEPA from the Code of Federal Regulations. In addition, this interim final rule requests comments on this action and related matters to inform the Council on Environmental Quality’s decision making. This interim rule was effective April 11, 2025. -
Dick O'Donnell

Calling Writers, Editors, and Creatives- Get Involved with NPSO Publications!

The NPSO Publications Committee is relaunching, and we need creative minds to sustain and flourish! This committee is not just about maintaining our cherished publications like *Kalmiopsis* and the *Bulletin* - it’s about expanding possibilities, finding new ways to connect with our community, and improve the tools we use to share knowledge about Oregon’s native plants!

We are looking for members who want to be a part of the creative process of NPSO’s print and digital media, develop fresh ideas for content, and explore new formats—such as essays, field reports, and digital storytelling. Whether you have experience in writing, editing, design, or simply a passion for native plants and communication, your input is valuable.

If you’re passionate about writing, editing, or sharing knowledge about Oregon’s native plants, we’d love to have you on board! To get involved or learn more,

contact president@npsoregon.org. Let's work together to shape the future of NPSO's publications!

OregonFlora

Oregon House Bill 3173, which would bring sustainable support for OregonFlora, did not advance in the legislative process, and so was not funded for the upcoming biennium. While that is certainly disappointing, there are many high points that resulted from our effort, the main one being a reminder of how many people use and enjoy OregonFlora's resources. Here is what we accomplished:

- In February, 338 letters of testimony were submitted for the HB3173 hearing before the House Committee on Agriculture, Land Use, Natural Resources, and Water.
- Our sponsoring legislator, Rep. Pam Marsh (Ashland), was enthusiastically joined by Rep. Sarah Finger McDonald (Corvallis) to co-sponsor the bill.
- Hundreds of folks were contacted via email and social media, raising awareness about OregonFlora and, in turn, informing legislators about its relevance and impact.



What's next? Given this foundation of support, our plan is to try again for sustainable legislative funding! As use of the oregonflora.org website continuously increases - our site has had over 784,000 pageviews in the past 12 months; up around 7% from the previous year - we're making it clear that the plant diversity information provided is important to agencies, businesses, and individuals across the state.

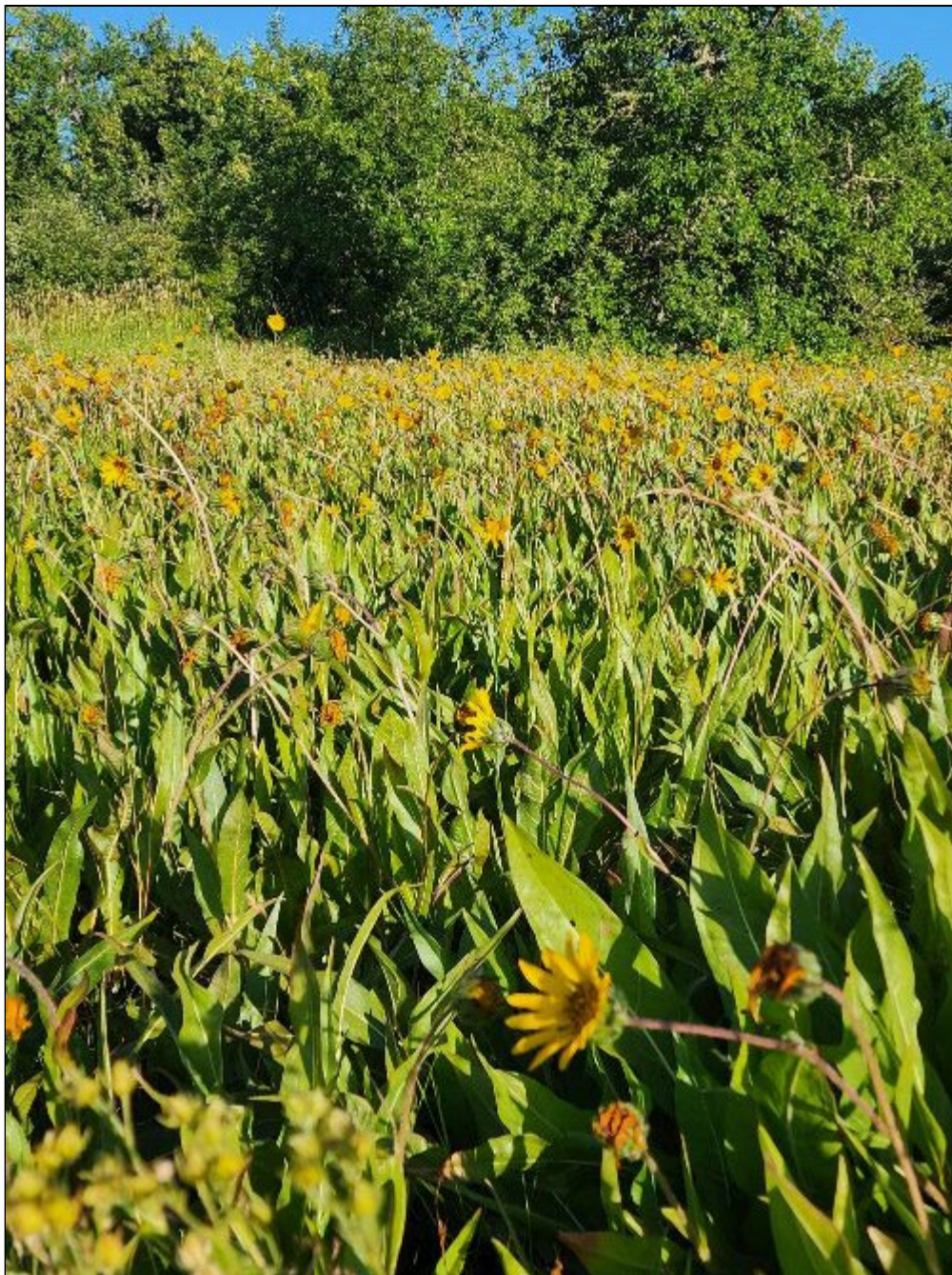
Thank you for voicing your support for OregonFlora! We could not meet our mission without you, and we pledge to continue to freely provide the public with the most accurate and comprehensive plant diversity information possible.

Heads up: Look in your inbox and online in the near future for a brief survey from OregonFlora. We want to know what aspects of our program you value, what you use the most, and what new features you would like to see.

As always, we value, and rely upon, your financial support for our programmatic expenses. You can contribute online through our [PayPal account](#), or by sending a check to the address on our [Donate](#) page. Please make checks payable to the Agricultural Research Foundation and include “OregonFlora” on the memo line. Your generosity is appreciated! -Linda Hardison

Photo Gallery

Welcome to the *Bulletin* Photo Gallery! Share your photos of Oregon's native flora, field trips, restoration projects, work parties, and activities with other NPSO members. Send photos with the following information: species/event, photographer, names of any people shown in photo, date of photo, location, and any other information you would like to have included in the photo caption to bulletin@npsoregon.org. Please get consent from any people included in your photo prior to sending it.



Kimberly St. Hilaire photographed this dense stand of narrow-leaved mule's ears (*Wyethia angustifolia*) in native prairie along the Territorial Highway near Eugene, Oregon, in late June 2025.

Oregon Mystery Plant

Last Month's Mystery Plant Revealed

Last month's mystery plant was giant vetch (*Vicia nigricans* var. *gigantea*). According to *Flora of Oregon*, this perennial inhabits the upper margins of beaches and coastal

forests. In Oregon it is found in the Cascades, Coast Range, Estuarine Coast, and Willamette Valley. It is also found in California, Washington, Alaska, and South America. Flora of Oregon says: "Lassetter and Gunn (1979) made the case for combining the common North American Pacific Coast taxon, *Vicia gigantea*, with *V. nigricans* of the South American coast."



Giant vetch. Photo by Kareen Sturgeon.

Mystery Plant
Do you recognize this plant?



This month's mystery plant was photographed by Jess Beauchemin on September 6, 2023. It was growing at about 7400 feet in elevation along a small creek below Hawkins Pass in the Wallowa Mountains, Oregon. Send your identification to the editor at bulletin@npsoregon.org.

Do you have an Oregon Mystery Plant to share? Send it to the editor at bulletin@npsoregon.org.

Call for Nominations for 2026 Fellows Awards

The Fellows Award is the highest honor bestowed in our Society, recognizing NPSO members for their exceptional contributions to the Society. The award comes with a certificate of recognition and lifetime membership in the Society.

In addition to honoring the recipient, the Fellows Award informs the general membership of the good deeds and long-time commitment of some members in supporting our mission, as well as outstanding contributions to knowledge of native plants. The award serves to inspire and encourage newer members to make their own contributions to the Society.

NPSO Chapters are encouraged to consider nominating a member who has served the organization over time and in different capacities. For inspiration, please refer to the variety of individuals who are currently Fellows at [Fellows - Native Plant Society of Oregon](#). We hope that individuals who are approached for nomination for the award will accept this recognition of their accomplishments. It's important for others to understand what it takes to run an organization staffed entirely by volunteers.

Guidelines for Fellows nominations are available online [here](#) or by request from the Fellows Committee at fellows@npsoregon.org. Nominations should be submitted to the Fellows Committee at that email address before December 31 (earlier submission is encouraged). Nominations must include an essay describing the nominee's accomplishments and a good quality digital photo of the nominee that is suitable for publication. The Fellows Committee will evaluate nominations that meet the submission criteria and recommend awardees to the State Board. Awards will be presented at the next Annual Meeting; biographies and photos of recipients will be posted on the NPSO website.

Additional Fellows Committee members are needed. If you are interested, please email to fellows@npsoregon.org. - *Lisa Blackburn*

Come Visit the Portland State University Herbarium and Rae Selling Berry Seed Bank!

The public is cordially invited to attend a joint open house tour of the Portland State Herbarium (Herbarium) and the Rae Selling Berry Seed Bank at Portland State University on October 6, 2025, from 12:00 pm to 3:00 pm.

What is an herbarium? It is a collection of dried and mounted plants that are systematically identified and classified (by family, genus, and species) and the facilities in which the collection is kept.

Why is the Herbarium important? It provides archival documentation and voucher specimens of historical and contemporary vegetation which are used to examine, compare, and identify species and their localities. It can be used to document changes to vegetative communities over time (including invasive weed migration) and to provide baseline vegetation data useful in planning ecological restoration projects.

What is a seed bank? It is an 'ex situ' conservation facility that stores seeds from various

plant species, often for extended periods of time.

Why is the Rae Selling Berry Seed Bank important? It preserves and supports the long-term viability and genetic diversity of plants (including rare species) for future generations through seed storage, which minimizes exposure to threats from such things as climate change and habitat loss. It is essential for research in plant germination and breeding studies and may provide materials for restoring ecosystems and/or re-introduction of species that have been lost from their native habitats.

The Herbarium visit will showcase both recent and historical botanical collections (including those by Joseph and Thomas Howell) and provide opportunity to discuss ongoing and past projects (including the Urbanizing Flora of Portland). The Rae Selling Berry Seed Bank visit will include a tour of the seed vault and greenhouse to learn the importance of seed banking, plant propagation, and seed germination techniques, and to learn about rare plant surveys led by seed bank staff and volunteers. There will be ample opportunity to discuss with staff the importance of the Herbarium and Seed Bank as critical resources for our local natural resource community including land managers, conservation practitioners, and botanical hobbyists!

Please consider extending this invitation to your staff and other natural resource partners!

The Herbarium and Rae Selling Berry Seed Bank are located in the basement of the Science, Research, and Teaching Center building on the Portland State University campus (rooms B1-34 and B1-81, respectively), 1719 SW 10th Ave. Portland, OR 97201. -*Portland State Herbarium*

The Vine

The *Flora of Oregon* defines a vine as: "Trailing or climbing plant with a long, flexible stem, often supporting itself using tendrils." This section of the *Bulletin* is for those trailing stems and tendrils: short announcements, links to other articles, reminders, and other short items of interest to all NPSO members for which a full *Bulletin* article is not needed. Send your submissions to the editor at bulletin@npsoregon.org.

~~~~~

Register for Mount Pisgah Arboretum Forest Ecology Workshops at the following link:

[Mount Pisgah Arboretum · Forest Ecology Workshop Series](#)

~~~~~

Information on an upcoming Institute for Applied Ecology open house can be found at the following link:

[Celebrating 25 Years of Recovering Species, Saving Ecosystems - Institute for Applied Ecology](#)

~~~~~

Access the U.S. Forest Service "Celebrating Wildflowers" website [HERE](#)

~~~~~

Chapter Notes

Important Note to Field Trip Participants: Trips may be strenuous and/or hazardous. Participation is at your own risk. Be prepared to sign a release form indicating this. A sample waiver form is available at [NPSO-Waiver-of-Liability-2015](#).

Cheahmill

For questions, or to be added to the Cheahmill Chapter's email list for reminders of upcoming programs and events, please contact the Cheahmill Chapter President at ch_president@NPSOregon.org.

Check out our Facebook page at <https://www.facebook.com/NPSO.Cheahmill>.

Saturday, August 23, 9:00 am - 11:00 am

Work Party #306: Native Plant Garden at McMinnville Public Library

Location: McMinnville Public Library

Help the garden crew with maintaining the Native Plant Garden at McMinnville Public Library. The garden has matured and will be beautiful this month, making our work very enjoyable! Bring gloves, bucket, and gardening tools if you have them. For more information, contact Catie Anderson at catie.fishback@gmail.com or 971-241-7634.

The library is located at 225 NW Adams Street (corner of Highway 99 W and SW Second Street), McMinnville, Oregon. The library parking lot may be entered from either Adams or Second Streets.

Saturday, September 27, 9:00 am - 11:00 am

Work Party #307: Native Plant Garden at McMinnville Public Library

Location: McMinnville Public Library

Help the garden crew with maintaining the Native Plant Garden at McMinnville Public Library. The garden has matured and will be beautiful this month, making our work very enjoyable! Bring gloves, bucket, and gardening tools if you have them. For more

information, contact Catie Anderson at catie.fishback@gmail.com or 971-241-7634.

The library is located at 225 NW Adams Street (corner of Highway 99 W and SW Second Street), McMinnville, Oregon. The library parking lot may be entered from either Adams or Second Streets.

Corvallis

For questions, information on upcoming events, or to be on the Corvallis Chapter email list, contact co_president@NPSOregon.org. Find us on Facebook at facebook.com/CorvallisNPSO.

Saturday, August 16, 9:00 am - 3:00 pm

Field Trip: Beaver Creek State Natural Area and Ona Beach in Newport

Leader: Alexandria Kurokowski

Join Alexandria Kurowski to escape the late-summer heat with an easy field trip to a unique and diverse set of plant habitats! We'll start the morning observing various wetland plant species on a brief hike through the Beaver Marsh area south of Newport, Oregon. After lunch, we'll travel over to Ona Beach across Highway 101 to see coastal plants and the ocean!

At Beaver Creek, we'll have a short (about 1/2 mile) hike to the boardwalk area from the visitors' center at Beaver Creek, and as far down the Beaver Marsh Trail as people dare to go due to the trail being wet (generally only a few yards). Afterwards, we'll drive over to Ona Beach parking area and walk to the beach from there, about another 0.3 miles for a total of a little over a mile of walking for the entire trip. There is very minimal elevation gain.

Please bring lunch and water, dress appropriately for variable weather conditions (could be quite warm at the marsh and windy and cold at the beach), and I'd suggest bringing binoculars if you have an interest in birdwatching.

We will meet at the Oregon State University, Wilkinson Hall parking lot (44.569, -123.281) southwest of Java Crew coffee shop, at 26th and Monroe in Corvallis at 9:00 am. To sign up for this field trip, please contact Alex at: alexandriadckr@gmail.com.

Saturday, August 30, 10:00 am - 12:00 pm

Event: Work Party at the Avery Native Plant Garden

Leader: Esther McEvoy

Location: Avery House Nature Center, Avery Park, Corvallis

Come help with summer clean up. Bring gloves, clippers, trowel, and bucket. Contact Esther for more information or to RSVP at 541-990-0948 or estherco@peak.org.

Saturday, September 27, 10:00 am - 12:00 pm

Event: Work Party at the Avery Native Plant Garden

Leader: Esther McEvoy

Location: Avery House Nature Center, Avery Park, Corvallis

Come help with fall clean up including pruning and weeding. Bring gloves, clippers, trowel, and bucket. Contact Esther for more information or to RSVP at 541-990-0948 or estherco@peak.org.

Emerald

Saturday, August 23, 9:00 am

Field Trip: Three Mile Prairie County Park, Florence

Leader: Ed Alverson

Join leader Ed Alverson for a cool exploration of the urban sand dune ecosystem at Three Mile Prairie County Park in Florence. The 170-acre park supports native plants associated with open dunes, seasonal ponds/wet meadows, shore pine forest, as well as several rare native plant communities.

Meet at South Eugene High School at 9:00 am, or at 10:30 am at the parking lot just north of the Fred Meyer store on Hwy 101 in Florence. Bring lunch and water, and appropriate gear for wind and sun while walking on bright open sand. Look for the sign up under events at the Emerald chapter website:

<https://emerald.npsoregon.org/emchapevents/>

Monday, September 25, 7:00 pm - 9:00 pm

Presentation: Oregon Native Seed Strategy

Presenter: Danielle Marshall, Oregon Department of Agriculture

Location: Amazon Community Center, 2700 Hilyard St, Eugene

The Oregon Native Seed Strategy is a new guidance document developed by numerous government, non-profit, and academic partners to address native seed needs in Oregon. Come learn from Dani Mitchell, state conservation biologist, how Oregon is planning to coordinate and expand the state's native seed supply chain to implement landscape-scale restoration as our state experiences unprecedented environmental pressures such as the 2020 fires, a depleted seed bank, and various impacts of climate change.

High Desert

For information, visit our website: www.highdesertnpsoregon.org or Facebook page: [Native Plant Society of Oregon: High Desert Chapter](#), or email us at highdesertnpso@gmail.com. Find our latest field trip observations on iNaturalist, <https://www.inaturalist.org/projects/high-desert-chapter-npso-field-trips>.

Wednesday, August 6, 6:30 pm - 8:30 pm

Event: Pollinator Trivia Night

Location: Silver Moon Brewing, 24 NW Greenwood Ave., Bend, OR

Do you love native plants? Do you love pollinators? Well, take a shot at Pollinator Trivia night at Silver Moon Brewing! We will have prizes for 1st and 2nd place winners. Teams of six maximum. Co-sponsored by High Desert Chapter of NPSO and Pollinator Pathway of Bend.

Klamath Basin

For information on the Klamath Basin Chapter, contact kb_president@npsoregon.org, visit our website: <http://klamathbasinnps.com>, or find us on Facebook: [\(13\) Klamath Basin Chapter - Native Plant Society of Oregon | Facebook](#).

Chapter meetings are scheduled for the first Monday of each month at the Klamath County Museum in Klamath Falls, Oregon. Presentations are held at the Meeting Room at the back of the Klamath County Museum (1451 Main Street).

The Native Plant Garden at the Klamath County Museum is a great example of how native plants can be incorporated into a garden setting. Volunteers help throughout the year to complete necessary weed abatement and maintenance to the existing plant beds. Typically, these workdays are Saturdays from 9:00 am - 11:00 am between April-August.

Portland

Member-only Newsletters

NPSO members affiliating with the Portland chapter receive two email newsletters a month. They are this *Bulletin*, from NPSO, and a second newsletter, the *Calochortus*, from NPSO Portland. These are the only two member-only ways to learn about upcoming field trips, programs, and other events. Our social media type postings are for the public, members, and non-members alike.

You can sort your inbox by 'NPSO Portland' to find all of your back copies of the *Calochortus*. Portland-affiliating NPSO members are asked to use the Chapter G-mail, npsopdxchapter@gmail.com, to alert the chapter leadership when you are not able to find these newsletters in your inbox. Someone will get back to you for troubleshooting.

Member-only Shared Google Calendar

NPSO Portland is using Google Calendar to share the sign up and fine details like trip leaders, locations, dates, and speakers. The link is shared regularly in both newsletters. The simplest way for you to keep track of upcoming events is to use the calendar, but that means having your own personal Google account. If you do not use Google, then just sort your email inbox to find your latest newsletters.

NPSO Portland Social Media Postings for the General Public

Reaching the wide age group of the over 350 NPSO Portland members means using different social media platforms. It is a priority of NPSO Portland to attract younger persons and students to learn about and enjoy native plants, and that is why Instagram is the primary site for posting @npsopdx.

Ten days prior to upcoming field trips and events, postings may occur to alert members and non-members alike who follow our social media pages. Posts to Instagram are auto linked to show up on Facebook. You may find a last-minute event posted to social media because it missed the 20th of the month deadline for the next *Bulletin*. Some events are also posted to MeetUp, the scheduling site, but it is best to directly contact the hike leader via the information provided in the newsletter event postings or use the shared Google calendar.

Website resources for the general public

The general public has access to native plant resource and information about NPSO at portlandnativeplants.org (Portland chapter) and npsoregon.org (statewide with chapter pages also).

Portland Chapter Volunteerism: How to Give Back

Become a Member of the Chapter Board of Directors

A call for nominations will be sent to you in early September to nominate yourself or others for these roles.

- Program committee chair - this is your opportunity to shape the future of chapter programs, including in-person, locations, speakers, and hybrid programs.
- Publicity committee chair - this is your opportunity to shape the future of chapter publicity, in conjunction with the membership committee, for how to best use newsletters, social media, and other avenues to allow for online and in-person interactions among members. As chair, you already will have three fantastic volunteers (Denise Hanggi, Beth Nix, and Nancy Howarth) already in place for you to work with keeping the Instagram posts and the chapter newsletter communications running.
- Member-at-large - this is your chance to pitch in on ad hoc projects that arise through meetings of the board. The by-laws allow four to 'share the work', and currently two are filled.

Please send an email of interest in nominating to npsopdxchapter@gmail.com with the Subject line: Board positions for 2025

On-Line Programming

Mark your calendar for the months of September to December for the 2nd Thursday programs at 7:00 pm. There will not be a program in August. September program: "Find New Botanical Wonders with Digital Tools", by Kieran Hanrahan.

August/September field trips

Members only shared Google Calendar link:

<https://calendar.google.com/calendar/u/1?cid=bnBzb3BkeGNoYXB0ZXJAZ21haWwuY29t>

Go to the calendar link for additional last minute field trips that did not make it into this

newsletter. *Follow Instagram @npsopdx a week in advance for reminders!* See below for detailed trip descriptions. So far there are no field trips scheduled for September.

Saturday, August 16, 10:00 am - 12:00 pm

Field Trip: Anvil Lake, Black Wolf Meadows

Leaders: Jason Clinch and Lecia Schall

Location: Anvil Lake, Oregon

Black Wolf Meadows (4,165 ft) and nearby Anvil Lake is a beautiful, secluded, and little visited setting, northwest of Timothy Lake. It provides a chance to view a variety of high marsh, bog, and forest wildflowers depending on the timing.

This trip may include *Kalmia* (bog laurel, probably past bloom), staghorn clubmoss, elephant's head lousewort, gentian (pre-bloom), buckbean, bog orchids, western false asphodel (*Tofieldia glutinosa*), sundew (*Drosera* sp.), and gnome plant (but only if we're very lucky.) This will be a 3-mile round trip hike.

The leaders of this treasured annual hike have changed, and the date might as well. We are also looking to possibly do an optional overnight campout nearby as has been done in the past. If you are still interested, read on and fill in the form below. Please use this link to the [BWM/ALake Google Form](#) to register.

Driving time is two hours from Portland, via Highway 26 and 42 towards Timothy Lake, etc. Carpooling is recommended as there is not much parking space. Meet in Portland at 8:30 am. Group size limited to twelve. Carpools, use the calculated amount each should pay, (15 cents per mile round-trip, .45 per carload).

Saturday, August 23, 8:00 am - 12:00 pm

Field Trip: Bird Lake, Mount Adams

Leaders: Mary Hayden and Elly Adelman

Meeting Location: Carpool from Troutdale outlet mall at 7:30 am

Join us as we venture into Mt. Adams Recreation Area, Yakama Nation, in search of explorer's gentian, grouseberry, magenta paintbrush, hooded ladies tresses, and other mountain garden delights. We'll follow Crooked Creek, freshly decked in Lewis' monkeyflower and streamside arnica, to 50' Crooked Creek Falls. Then we'll return on a loop via Bluff Lake with views of Mt. Adams. The trip has 800' in elevation gain and 5.5 total miles.

Bring lunch and water. The hike is of moderate difficulty. Trek poles and binoculars are optional. Email hayden.mary.k@gmail.com to register or if you have any questions.

Siskiyou

To sign up for the Siskiyou Chapter NPSO monthly eNews on a new platform: [sign up](#)

To view our YouTube Channel and watch past programs: <https://www.youtube.com/channel/UCXFI2J9yp2AYmUzNz0jLISw>

To join a native plant google group forum: Siskiyou-Chapter-NPSO-plant-talk@googlegroups.com

To join our Facebook page: <http://www.facebook.com/SiskiyouChapterNativePlantSocietyOfOregon>

Our monthly chapter meetings will resume in September but see our exciting list of plant hikes in the eNews.

South Coast

The South Coast Chapter covers Curry and Coos counties. Guests or members of other chapters are welcome at our events. To join our mailing list, please contact Mark Collins at westernstatesguy@gmail.com.

Visit our Facebook page at: <https://www.facebook.com/NPSOSouthCoastChapter>.

Saturday, August 9, 10:00 am - 12:00 pm

Event: Quarterly Membership Meeting

Leader: Gail Perrotti, gperrotti@earthlink.net or 541-414-9777

Location: LDS Church in Port Orford 2000 Jackson St, Port Orford, OR 97465

This is our quarterly membership meeting. Guest speaker Vanessa Robertson-Rojas, The Understory Initiative, will share information on local restoration efforts and tips for seed collection.

Saturday, August 16, 10:00 am - 12:00 pm

Field trip: Plant Walk at Lolo Lake Coastal Trail (Pistol River)

Leader: Julia Bott, jbott@batnet.com or 650-520-5673

Location: 23844-23642 Oregon Coast Hwy, Gold Beach, OR 97444

On this hike, we will visit a recent restoration project to restore bear berry (*Arctostaphylos uva-ursi*) groundcover. We'll also see lots of moss and lichens and many small forbs, including giant rattlesnake plantain (*Goodyera oblongifolia*). The walk will be approximately 2 miles in total distance, moderately difficult, with some sand and elevation.

Fall Plant Sale

There will be a great selection of coastal adapted perennials for fall planting. Preordering period opens August 1 and closes September 13. The pickup date is September 20. For more information check, <https://www.facebook.com/NPSOSouthCoastChapter> or contact Gail

Perrotti, gperrotti@earthlink.net or 541-414-9777.

Between September 16 to October 10, Date and time to be determined. More details will be provided in September.

Event: Seed collection for endangered pink sand-verbena

Contact: Jeanne Standley, jstandley@charter.net, (541) 294-2113

Location: Coos Bay North Spit, meet at BLM Boat launch parking lot. Participants will be taken to the site by four-wheel drive.

The Coos Bay District, Bureau of Land Management, needs help collecting seed from pink sand-verbena on the North Spit of Coos Bay. Pink sand-verbena (*Abronia umbellata* ssp. *breviflora*) is listed by the Oregon Department of Agriculture as endangered. The population of pink sand-verbena on the Coos Bay North Spit is the largest known population in Oregon and currently the only population large enough to provide significant quantities of seed for restoration of the species.

Umpqua Valley

Check out our Facebook page, www.facebook.com/UmpquaValleyNPSO. Not online? - call Donna Rawson at 541-643-0364.

All Field Trips: Reservations are required. We ask that you text or call Rod Trotter at 541-672-1907 or text or call Donna Rawson at 541-643-0364 to reserve a spot and again the night before the trip to confirm your plan to attend and to be sure the schedule has not changed. Please join us.

The meeting place for all trips is the West Side Native Plant Garden in Roseburg. This garden is off Harvard at the First United Methodist Church, just west of the Westside Community Gardens in Roseburg. From Harvard Avenue, turn onto W Keady Court. Just before you get to Fremont Middle School (850 W Keady Court), turn left and drive a short distance through the parking lot to the garden area. Alternate meet-up locations along the route can be arranged.

Willamette Valley

Saturday, August 9, 10:00 am - 4:00 pm

Event: Englewood Forest Festival

The Willamette Valley Chapter will have an outreach table at the Englewood Forest Festival at Englewood Park in Salem and offer a "Plant a Wildflower" activity for kids and festivalgoers. Join us at this fun, family-friendly event. For more information about the festival, visit <https://www.inglewoodforestfestival.org/>.

Thursday, September 18, 6:30 pm - 7:30 pm

Zoom Program: Protecting Oregon's Wild Forests and Rivers

Presenter: Chandra LeGue

The wild places, forests, and rivers we enjoy exploring in Oregon all have stories to tell - ecological and political. Oregon Wild's Senior Conservation Advocate, Chandra LeGue, joins us to explore Oregon's forests and wild lands: what makes them so important, the changes and challenges they experience over time, and some of the advocacy work that goes into preserving Oregon's most treasured places. Chandra has been focused on public forest policy, community engagement, and education on this topic for the past twenty years. A self-described "nature nerd," Chandra has degrees in biology and environmental studies and is author of "*Oregon's Ancient Forests: A Hiking Guide*."

For more information and to register for this Zoom presentation, email John Savage at wvnpsso@gmail.com.

William Cusick

Chapter notices and communications are done primarily through a Google group. For more information or to be added to the Google group, please contact Susan Geer at 541-963-0477 or susanmgeer@gmail.com. Our website is not currently functional.

~~~~~

## **Native Plant Interest Groups:**

### **Filipendula**

For more information, visit our Facebook page: [NPSO-Filipendula Chapter](#)

---

## **NPSO State Officers**

- President: Steven Yeager, [president@npsoregon.org](mailto:president@npsoregon.org)
- Immediate Past President: Dan Luoma, [past\\_president@npsoregon.org](mailto:past_president@npsoregon.org)
- Vice President: Jason Clinch, [vice-president@npsoregon.org](mailto:vice-president@npsoregon.org)
- Secretary: Kim Brown, [secretary@npsoregon.org](mailto:secretary@npsoregon.org)
- Treasurer: Sean Cawley, [treasurer@npsoregon.org](mailto:treasurer@npsoregon.org)
- Directors: Catherine Alexander, Marshall Doak, Dick O'Donnell, Judi Sanders, Rachel Werling, and Megan Westby

## **Committees & Chairs**

- Budgets and Grants: [Dan Luoma](#)
- Bulletin Editor: [Faye Streier](#), Proofreaders: Kaitlin Andersen, Ken Berg, Camille Stewart
- Conservation: [Dick O'Donnell](#)
- Friends Of The OregonFlora Project: [Linda Hardison](#)
- iNaturalist: [Gail Baker](#)
- Legislative: [Dave Garcia](#)

- Membership: [Rachel Werling](#)
- NPSO Fellows: [Lisa Blackburn](#)
- Native Plant Appreciation Month: [Judi Sanders](#)
- Rare & Endangered Plants: [Jason Clinch](#)
- Webmaster: [Tom Pratum](#)
- More information about our NPSO Fellows [here](#).

Chapter Presidents and contact information [can be found here](#).



Website



Facebook

*Copyright © \*2025|\* \*|Native Plant Society of Oregon| \*All rights reserved*