



NPSO 2026 ANNUAL MEETING

field trips | workshops | presentations

Please read and follow the field trip ranking instructions on the following page after reviewing the [meeting schedule](#) and descriptions of the guided field trips, nature talks, and workshops, which you'll find on the following pages. ► **Field trip rankings are due by Friday, May 22.**

Call for Assistant Trip Leaders Page 2
Field Trip Ranking Instructions Page 3
Full-Day Guided Field Trips Pages 3-6
Half-Day Guided Field Trips Pages 7-9
Workshops & Nature Talks Pages 10-11
Keynote Presentation Page 12
Self-Guided Field Trips Pages 13-14
Special Guided Field Trip Page 15
At-A-Glance Guide Page 16

Questions?
Contact John Savage
at wvnpsso@gmail.com
or at 503-779-5414.

All guided field trips will meet in the parking lot at the [Willamette Heritage Center](#) (1313 Mill Street SE, Salem) at 8:00 am on Saturday, May 30, and will depart at 8:30 am. Half-day trips will return by 1:00 pm. Full-day trips will return by 4:00 pm.

Three afternoon activities will also take place on Saturday, May 30, from 2:00-4:00 pm:

1. **Nature Talks: "Plants, People, & Common Ground"** with Rose Grimson and Jeremy Ojua and **"On the Search for Oregon's Castilleja Species"** with Ed Cope.
Location: [Card Room](#), 3rd floor of the Mill Building at the Willamette Heritage Center.
2. **Workshop: "Microwave Plant Pressing Techniques"** with James Anello.
Location: [Spinning Room](#), 3rd floor of the Mill Building at the Willamette Heritage Center.
3. **Workshop: "Native Plant Morphology"** with Steven Yeager.
Time: 2:00-4:00 pm. Location: [Ankeny Hill Nature Center](#), 130 Ankeny Hill Rd SE, Jefferson.

Registrants who rank one or more of the half-day field trips among their top choices are encouraged to rank the three afternoon activities (listed above) on the ranking form. ► **Field trip, nature talk & workshop choices will be processed on a first-come, first-served basis for those who have completed an Annual Meeting registration.** (Please complete your registration first.)

In addition to the guided trips on May 30, eight self-guided field trips will take place on Friday, May 29, and Sunday, May 31. The self-guided trips don't need to be selected or ranked in advance.

CALL FOR FIELD TRIP ASSISTANT LEADERS

The Willamette Valley Chapter is seeking volunteers to assist our field trip leaders during the guided field trips on Saturday, May 30. No specialized knowledge is required! Responsibilities include:

Before the trip:

1. Communicate with your leader to clarify responsibilities. (The leader or a WV Chapter member will contact you.)
2. At the meeting place, hold a lollipop sign (provided) for your trip.
3. Check off participants as they arrive on a list that will be emailed to the leader in advance and provided to you at the group meeting site.
4. Confirm that all field trip participants have check-in for the Annual Meeting in the Spinning Room at the Willamette Heritage Center. (Meeting check-in is required before departure.)
5. Have participants sign waivers, if this hasn't already been done.
6. Help organize carpools at the meeting site, if needed.
7. Distribute hard copies of the driving directions, plant list, and other helpful information (to be provided by the WV Chapter).
8. Make sure that all trip participants have cell phone numbers for you and the trip leader.

During the trip:

1. Take a headcount at the trailhead or parking area at the field trip site before the trip/tour begins.
2. Serve as a "sweeper" (bring up the rear) and make sure everyone remains accounted for.
3. Help ensure participants do not stray from the group or go off trail without the trip leader's permission.
4. Carry a first aid kit (to be provided by the WV Chapter) and make it available for use by the participants as needed.
5. Take a headcount at the trailhead or parking area at the field trip site after the trip/tour ends and before the participants depart.
6. Be a timekeeper and monitor the time so the trip is completed and participants are back at the meeting venue by 1:00 pm (for half-day trips) or 4:00 pm (for full-day trips).



► **Contact John Savage at wvnps@gmail.com** if you are interested in assisting the leader of your field trip or indicate this on the field trip ranking form. (See ranking form link and instructions on next page.)

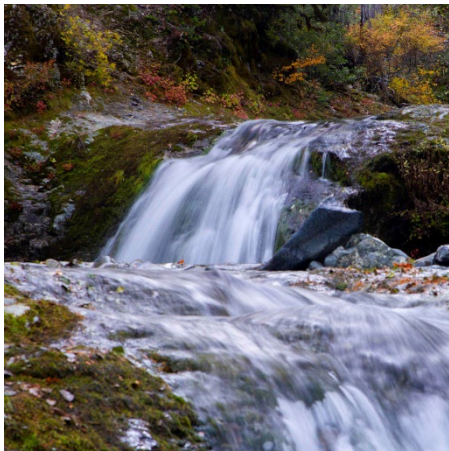
Note: each field trip is required to have an assistant trip leader identified prior to departure.

(Photo credit: Willamette Valley NPSO)

Field Trip Ranking Instructions:

1. After registering for the Annual Meeting, complete a field trip ranking form.
2. To complete the form, visit: <https://form.jotform.com/260655561914158>.
3. Rank the guided field trips in the order of your preference by entering the corresponding number. Use the numbers 1, 2, 3, etc., with 1 being your first choice, 2 your second choice, and so on. Please rank all field trips (1-12).
4. You are also welcome and encouraged to rank the afternoon workshops and nature talks.
5. Submitting a ranking form does not guarantee a specific field trip choice; however, we will make every effort to honor one of your top choices.
6. Field trip rankings are due on or before Friday, May 22 at 7:00 pm.
7. Field trip choices will be processed in the order in which they are received.
8. If you complete a ranking form before registering for the Annual Meeting, the date and time stamp on your registration will also apply to your ranking form.
9. You will be notified via email of your field trip prior to the Annual Meeting.
10. Questions? Contact John Savage at wvnps@gmail.com or at 503-779-5414.

FULL-DAY GUIDED FIELD TRIPS



(Photo credit: BLM)

Silver Falls State Park, North Fork Silver Creek

Please note: This half-day hike has been combined with the Silver Falls North Canyon Vernal Wet Meadows walk (see next page) into one full-day field trip. Total distance: 4 miles.

Descend into the canyon of the North Fork of Silver Creek in this 3-mile loop hike. Highlights include three waterfalls with the trail passing behind the thundering 136-foot North Falls. Plants on this hike include Scouler's corydalis (*Corydalis scouleri*), Hall's false rue anemone (*Enemion hallii*), and false bugbane (*Trautvetteria carolinensis*).

Leader: Matt Palmquist, Silver Falls State Park Ranger and NPSO Willamette Valley Chapter board member.

Distance: 3 miles

Elevation gain: 250 feet

Hike Rating: Easy-Moderate

Background Information: <https://www.alltrails.com/trail/us/oregon/north-falls-winter-falls-and-twin-falls-via-canyon-and-rim-trails>

Plant List: <https://oregonflora.org/checklists/checklist.php?clid=27&pid=1>

(Continued on next page)

Silver Falls State Park, North Canyon Vernally Wet Meadows

Please note: This half-day hike has been combined with the Silver Falls North Fork Silver Creek hike (see previous page) into one full-day field trip. Total distance: 4 miles.

This one-mile round-trip walk with no elevation gain visits a large vernally wet meadow. Both species of camas (*Camassia quamash* and *C. leichtlinii* ssp. *Suksdorfii*), as well as slender goldenbanner (*Thermopsis montana*), and meadow deathcamas (*Toxicoscordion venenosum*) thrive in this unique habitat.

Leader: Matt Palmquist, Silver Falls State Park Ranger and NPSO Willamette Valley Chapter board member.

Distance: 1 mile

Elevation gain: Flat

Hike Rating: Easy

Background Information: <https://stateparks.oregon.gov/index.cfm?do=park.profile&parkId=151>

Plant lists: <https://oregonflora.org/checklists/checklist.php?clid=27&pid=1>



Kingston Prairie Preserve & Bird Haven Tree Conservancy

Owned and managed by Greenbelt Land Trust, the 155-acre Kingston Prairie preserve southeast of Stayton is one of the best examples of native prairie remaining in the Central Willamette Valley. Blooming wildflowers will likely include Willamette fleabane (*Erigeron decumbens*), Oregon larkspur (*Delphinium oregonum*), slim-leaf onion (*Allium amplexans*), ookow (*Dichelostemma congestum*), fragrant popcornflower (*Plagiobothrys figuratus*), large camas (*Camassia leichtlinii*), meadow death camas (*Toxicoscordion venenosus*), and bog deervetch (*Hosackia pinnata*). The site also supports bird species including nesting western meadowlarks, western kingbirds, and northern harriers. This trip includes a visit to the nearby Bird Haven Tree Conservancy to learn about the native plant restoration on this 290-acre riverfront property. (Photo credit: NPSO WV Chapter)

Leaders: John Savage, Willamette Valley Chapter NPSO board member, and Jan Irene Miller and Jim Bayuk, owners of the Bird Haven Tree Conservancy

Distance: 2.25 miles

Elevation gain: Flat

Hike Rating: Easy

Background Information: <https://greenbeltlandtrust.org/conserving-land/kingston-prairie-preserve/>

Plant List: <https://oregonflora.org/checklists/checklist.php?clid=13&pid=1>



Cascade Head Nature Conservancy Preserve

After starting at Knight Park near Otis, this hike climbs through a coastal forest with Sitka spruce (*Picea sitchensis*), Western hemlock (*Tsuga heterophylla*), red alder (*Alnus rubra*), and many moist conifer forest forbs, ferns, and shrubs. The hike emerges into a coastal prairie where participants may see hairy checkermallow (*Sidalcea hirtipes*), seashore

paintbrush (*Castilleja litoralis*), coyote bush (*Baccharis pilularis*), Cascade Head silene (*Silene douglasii*), Menzies larkspur (*Delphinium menziesii*), Oregon iris (*Iris tenax*), and many native prairie grasses. The group will turn around at the Lower Viewpoint. (Photo credit: City of Independence)

Leader: Kevin Calvert, educator and naturalist

Distance: 4.2 miles round

Elevation gain: 1,200 feet

Hike Rating: Moderate-Strenuous

Background Information: <https://www.nature.org/en-us/get-involved/how-to-help/places-we-protect/cascade-head/>

Plant lists: <https://oregonflora.org/checklists/checklist.php?cl=9681&pid=2>



Shellburg Falls

The Shellburg Falls State Recreation Area is in the Santiam State Forest east of Salem. The 2020 Beachie Creek fire scorched much of the area causing it to be closed for several years. Participants will see a forest in recovery with many charred trees but a rich undergrowth of native ferns, forbs, shrubs, and trees. Plants in bloom likely will include bleeding hearts, violets, false Solomon's seal, irises, and monkey flower.

(Photo credit: Trailkeepers of Oregon)

Leader: Sarah Hamilton, Native and Invasive Plant Specialist, Marion Soil and Water Conservation District

Distance: 3.5 miles

Elevation gain: 150 feet

Hike Rating: Easy

Background Information: <https://www.pinesnvines.com/adventures/shellburg-falls-trail-reopened>

Plant List: Help create a new plant list for this location! This field trip has been selected as an NPSO 2026 iNaturalist bioblitz field trip. Tutorials will be provided during the trip.



Horse Rock Ridge

Located in the transition zone between the western Cascades and the Willamette Valley, Horse Rock Ridge holds a rich plant diversity including species from the Willamette Valley, those more commonly found in the Cascades and even a few species usually found east of the Cascades. The ridge contains a mosaic of meadowed south-facing slopes, basaltic outcrops and stands of

Douglas-fir. Bristly manzanita and a sprinkling of Oregon white oaks fringe the open areas. Two vernal pools border the well-defined trail, which ends at an exposed basalt dike that stretches for 100 meters. Views encompass the Three Sisters and Mount Jefferson. *(Photo credit: Oregon Hikers)*

Leader: Bobbie Snead, environmental educator and author

Distance: 3.2 miles round trip

Elevation gain: 600 feet

Hike Rating: Easy-Moderate with three short steep sections (hiking poles recommended)

Background Information and Plant List:

<https://www.npsoregon.org/kalmiopsis/kalmiopsis11/horserockridge.pdf>



Herbert Farm & Natural Area

Herbert Farm and Natural Area is a 221-acre property located a few miles south of Corvallis. The Natural Area features native oak groves, riparian woodland, and upland prairies. Restored over the past decade from agricultural fields to natural habitat, this site represents one of the best examples of prairie restoration in the Willamette Valley. Native wildflowers

include checkermallows, tarweeds, *Collomia spp*, peacock larkspur (*Delphinium pavonaceum*), and golden paintbrush (*Castilleja levisecta*). *(Photo credit: Institute for Applied Ecology)*

Leader: Sara Alaica, restoration biologist and author

Distance: 2.5 miles

Elevation gain: 150 feet

Hike Rating: Easy

Background Information:

<https://www.corvallisoregon.gov/parksrec/page/herbert-farm-natural-area>

<https://www.ser.org/news/610275/Restoring-Herbert-Farm--Natural-Area.htm>

Plant List: <https://oregonflora.org/checklists/checklist.php?cl=10559&pid=2>

HALF-DAY GUIDED FIELD TRIPS



The Oregon Garden

Attendees will tour a Native Plant Demonstration Garden, a hardwood forest planted using two Xerces Habitat Kits, and a 25-acre oak grove with a 400-year-old Signature Oak that has been designated as one of Oregon's "Heritage Trees." Participants will also learn about about ***The Little Habitat Project***, an initiative

by Marion Soil and Water Conservation District to promote native plantings in urban and suburban areas. *(Photo credit: The Oregon Garden)*

Leaders: Roseanne Yoder, horticulturist with the Oregon Garden Foundation; Kassi Roosth, environmental education specialist with Marion Soil and Water Conservation District; and Jeremy Ojua, native plant nursery supervisor for the Confederated Tribes of Grand Ronde.

Distance: 1+ mile

Elevation gain: Flat

Hike Rating: Easy

Background Information: <https://oregongarden.org/gardens/>

Plant List: <https://oregongarden.org/plants-of-interest/>



Heritage Seedlings

Participants will see more than 100 species of native prairie wildflowers and graminoids on a tour of the native seed production and farm habitat restoration at Heritage Seedlings' Lake Farm property. This tour will highlight the entire process of native seed production and a variety of seed harvesting methods. Attendees will also learn about the work to restore riparian, oak woodland, and pollinator habitats on the farm.

(Photo credit: Heritage Seedlings)

Leader: Lynda Boyer, Restoration Biologist and Native Plant Manager, Heritage Seedlings, Inc.

Distance: 1 mile

Elevation Gain: Flat

Hike rating: Easy. Note: this walk will be in dirt and grass in full sun

Background Information: <https://www.heritageseedlings.com/habitat-restoration>

Plant list: <http://www.heritageseedlings.com/native-seed>



Baskett Slough National Wildlife Refuge

Located ten miles west of Salem, Baskett Slough National Wildlife Refuge features oak savanna, woodlands, prairie grasslands, wetlands, and croplands with a rich variety of native plants, including golden paintbrush (*Castilleja levisecta*), Willamette fleabane (*Erigeron decumbens*), Nelson's checkermallow (*Sidalcea nelsoniana*), common camas (*Camassia quamash*), Oregon sunshine (*Eriophyllum lanatum*), cat's ear lily (*Calochortus tolmiei*), red columbine (*Aquilegia formosa*), Oregon iris (*Iris tenax*), and Kincaid's lupine (*Lupinus oregonus*). Kincaid's lupine is a critical larval host plant for the endangered Fender's blue butterflies at this site. (Photo credit: Tom Kaye)

Leader: Aislinn Adams, botanical illustrator and environmental educator

Distance: 2.5 miles

Elevation gain: 300 feet

Hike rating: Easy-Moderate

Background Information: <https://www.fws.gov/refuge/baskett-slough>

Plant List: <https://www.inaturalist.org/places/baskett-slough-national-wildlife-refuge>



Delbert Hunter Arboretum & Botanical Garden

The Delbert Hunter Arboretum and Botanical Garden in Dallas is a “living museum” of native northwest plants and trees. The garden is maintained by the all-volunteer Friends of the Delbert Hunter Arboretum and Botanical Garden. Board members will lead a tour of the seven-plus acre site that features 162 native species including a wide range of conifers and hardwoods and riparian, wetland, prairie, coastal,

mountain, and alpine shrubs and forbs. (Photo credit: MindTrip)

Leader: Nancy Heuler (or other board members of the Friends organization).

Distance: 1 mile

Elevation gain: Flat

Hike rating: Easy

Background information: <http://www.delberthunterarboretum.org/>

Plant List: <http://www.delberthunterarboretum.org/?func=19&menu=8FB8B498-A02B-4872-A2DC-3A29B4BAB151>



Oak Meadows Natural Area

The 270-acre Oak Meadows Natural Area is located southwest of Stayton and was purchased by the Willamette River Preservation Trust in 2025. It hosts an expanse of wet prairie and contains oak woodlands, wetlands, and a creek that flows to the North Santiam River. This walk will include opportunities to see common camas, cinquefoil, blue-eyed grass, mules ear, brodiaeas, seablush, and many native sedges and grasses. Participants may also see and hear a western meadowlark and a range of native migratory songbirds. Wear waterproof footwear.

(Photo credit: Willamette River Preservation Trust)

Leader: Travis Williams, Executive Director, Willamette River Preservation Trust

Distance: 1.5 miles

Elevation gain: Flat

Hike Rating: Easy

Background Information: <https://www.wrtrust.org/protected-places>

Plant List: Help create a new plant list for this location! This field trip has been selected as an NPSO 2026 iNaturalist bioblitz field trip. Tutorials will be provided during the trip.



Willamette University at Zena

The 305 acre “Willamette University at Zena” property west of Salem supports academic research and environmental education and serves as a “living laboratory” for sustainability practices. The property features oak and mixed woodlands, Oregon oak savanna, upland prairie, riparian zones, wetlands, and freshwater habitats. The area has diverse native

plants including Roemer’s fescue, yarrow, Oregon sunshine, common selfheal, checkermallow, and cinquefoils. *(Photo credit: Polk Soil & Water Conservation District)*

Leader: Weston Miller, Director of Willamette University at Zena and Center for Land-based Learning and Professor of Environmental Science, Willamette University.

Distance: 1.5 miles.

Elevation gain: 250-foot elevation gain

Hike Rating: Easy on uneven, grass road.

Background information: <https://my.willamette.edu/site/sustainability/zena>

Plant List: <https://appliedeco.org/wp-content/uploads/WUZena-Restoration-Plan-2015-09-01.pdf>

WORKSHOPS

Half-day field trip participants are welcome to attend one of the workshops below. Please rank the afternoon workshops on the [field trip ranking form](#).



Microwave Plant Pressing Workshop

Saturday, May 30 | 2:00-4:00 pm
Spinning Room, Willamette Heritage Center

Learn how to use microwave plant presses to press native and cultivated plants. Microwave presses accelerate the pressing time and preserve the green colors of stems and leaves. Create pressings to frame or create notecards during this two-hour workshop on the 3rd floor of the Mill Building at the Willamette Heritage Center. All supplies are provided.

Leader: James Anello, cultural educator and member of the Confederated Tribes of Siletz Indians.



Plant Morphology Workshop

Saturday, May 30 | 2:00-4:00 pm
Meet in the Willamette Heritage Center parking lot at 1:15 pm and depart for the Ankeny Hill Nature Center at 1:30 pm.

Plant morphology is the study of the physical form and structure of plants to understand their function and biology. Additionally, it can be used to understand the relationships between different plants and their environments. Explore and compare the native plants surrounding the Ankeny Hill Nature Center. *(Photo credit: USFWS)*

Leader: Steven Yeager, NPSO State President and Executive Vice President, Mountain Rose Herbs.

PRESENTATIONS

Half-day field trip participants are welcome to attend the nature talks below. ► Please rank the two nature talks together as one activity on the [field trip rank choice form](#).



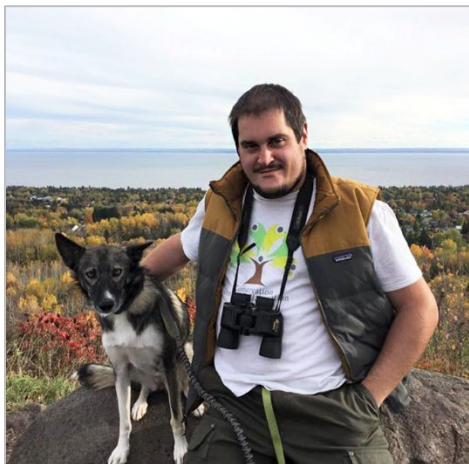
Nature Talk:

“Plants, People & Common Ground”

Saturday, May 30 | 2:00-3:00 pm
Card Room, Mill Building 3rd Floor
Willamette Heritage Center

This talk will be co-presented by Jeremy Ojua, native plant nursery supervisor for the Confederated Tribes of Grand Ronde, and Rose

Grimson, an environmental science student at Willamette University and 2025 winner of a Jean Davis scholarship from the NPSO Willamette Valley Chapter. Jeremy and Rose will discuss their recent work measuring and mapping soil health, native plant populations, and First Food plant populations at the Tribe’s native plant nursery and restoration sites. Their talk will highlight how interactive mapping tools can be used to support restoration work, community-based foraging, landscape histories, and ecological education. *(Photo credits L-R: IAE, Willamette University)*



Nature Talk:

“On the Search for Oregon's Castilleja Species”

Saturday, May 30 | 3:15-4:00 pm
Card Room, Mill Building 3rd Floor
Willamette Heritage Center

Ed is a restoration specialist with two bachelor’s degrees from Montana State University, one in Land Rehabilitation and one in Rangeland Ecology. He moved to Oregon in 2019 to pursue a master’s degree in Environmental Science. Before relocating to the Pacific Northwest, Ed

worked for the Natural Land Institute, one of the nation’s oldest land trusts. He currently manages restoration projects for the Coos Watershed Association as well as the Matson Creek Native Plant Nursery program. Ed is a passionate botanist and ecologist, and when he’s not working, you’ll find him out exploring Oregon’s remote landscapes on the hunt for rare plants, especially species of paintbrush. *(Photo credit: South Coast CWMA)*



**Keynote Presentation:
“Traditional Ecological Knowledge
of the Willamette Valley”**

Saturday, May 30 | 6:30-7:15 pm
Spinning Room, Mill Building 3rd Floor
Willamette Heritage Center

► *This presentation is part of the
Annual Meeting evening program and
does not need to be ranked.*

Greg Archuleta is Clackamas Chinook, Santiam Kalapuya, and Shasta, and is a member of the Confederated Tribes of Grand Ronde. He was born and raised in the Portland area and attended the University of Oregon, where he earned a bachelor’s degree in journalism and political science. He teaches about the history and culture of the Tribes of Western Oregon, including ethnobotany, carving, cedar hat making, Native art design, and basketry.

In 1987, Greg moved to the Grand Ronde Reservation to work for the Tribe as a newsletter writer and Hunting and Fishing Coordinator. Later he became an administrative officer for the tribe and worked in policy and planning before relocating back to Portland twelve years later. When Greg got back to the city, he realized that there were not the same cultural resources available to Tribal members who lived off-Reservation. As he explained in a recent interview, “We didn’t really have any programs, we had social service support and things like that, but we didn’t have any cultural programs, so that’s when I decided to create the Lifeways classes.”

I like to share the traditions, culture and history of the Tribes that make up the Confederated Tribes of Grand Ronde. I have been fortunate in learning much of what I know working with some of our Tribal elders, basketry artisans and in sharing through teaching and learning with other Natives. My primary focus as an artist is carving in the Columbia River Native Art Chinookan and Western Oregon forms and traditional/contemporary basketry.



(Excerpted from the [Confluence Project](#) & [Oregon ArtsWatch](#))
(Photo credits: Top: OPB; Bottom: Advisory Council on Historic Preservation)

SELF-GUIDED FIELD TRIPS

On Friday, May 29, and Sunday, May 31, explore one or more natural areas in the mid-Willamette Valley and Cascade foothills with your fellow chapter members or choose one of the adventures on the following pages and bring a few friends! No need to rank or sign up for self-guided trips. See the weblinks for driving directions, maps, and plant lists.

► Take care out there! The NPSO Willamette Valley Chapter strongly recommends the following:

- Choose a field trip that aligns with your abilities and fitness level.
- Go with at least two other people.
- Bring the [ten essentials](#) + a cell or satellite phone.
- Notify someone (other than your trip buddies) at the start and end of your trip.



Minto-Brown Island Park & Conservation Area

Before settler arrival, the Kalapuyans used the land along the Willamette River that is now Minto-Brown Island Park for fishing, hunting, and gathering. In the mid-1800s, the Indigenous inhabitants were forcibly removed and the land was settled by Isaac Brown (1857) and John Minto (1867) for agricultural purposes.

Established as a city park in 1970, the farmland was transformed once again into an expansive natural area, featuring extensive restoration, wetlands, and over 29 miles of trails, including a paved path connecting Minto-Island Park with Riverfront Park in downtown Salem. Bring your bike or your running shoes and enjoy the scenery at Salem's largest park. *(Photo credit: Travel Salem)*

Distance: Variable distances; see the map and choose your route

Elevation Gain: Flat

Hike Rating: Easy; ideal for walking, running, or cycling

Background Information & Driving Directions:

- <https://tinyurl.com/MintoBrownIslandPark>
- <https://tinyurl.com/MintoBrownMicroSeasonality>

Plant Lists:

- <https://tinyurl.com/MintoBrownPlantList1>
- <https://oregonflora.org/ident/key.php?cl=9785&proj=2&taxon=All+Species>

Trail Map: <https://tinyurl.com/MintoBrownIslandTrailMap>



Silver Falls State Park

(See recommended trail routes, below)

Even if you selected the North Fork, Silver Creek and Wet Meadow field trip on Saturday, there is much more to explore at this crown jewel in Oregon's state park system! Up for a scenic workout? Try the Buck Mountain Loop. Want to avoid the crowds? Head over to the Howard Creek Loop. Want to make it a full day? Combine two shorter hikes

with a break in between for lunch at the South Falls Café. Looking for an adrenaline-fueled experience? The Smith Creek, Catamount, and 214 trails are mountain bike friendly.

(Photo credit: Gary Halverson, Oregon State Archives)

Recommended Trails:

- [Trail of Ten Falls](#) (hikers only, no dogs) | 5 miles | Moderate-strenuous (see link for update)
- [Buck Mountain Loop](#) (multi-use) | 8.1 miles | Moderate
- [Smith Creek Loop](#) (multi-use) | 9 miles | Moderate
- [Howard Creek Loop](#) (multi-use) | 3.4 miles | Easy-Moderate (with one short, steep portion)
- [South Falls Campground Nature Loop](#) (hikers & dogs) | 1.2 miles | Easy

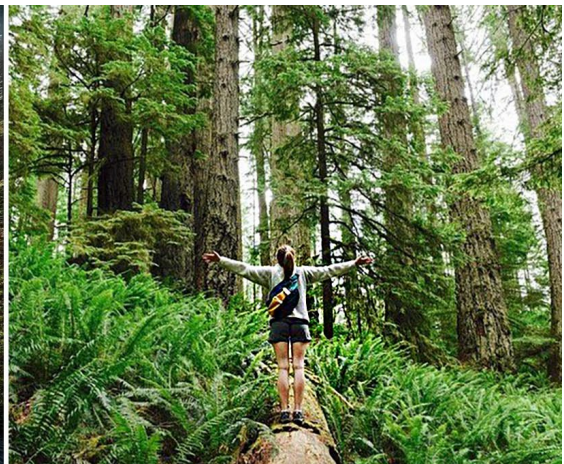
Elevation Gain: Variable, depending on the trail; see links above

Background Information & Driving Directions:

<https://stateparks.oregon.gov/index.cfm?do=park.profile&parkId=151>

Plant List: <https://oregonflora.org/checklists/checklist.php?clid=27&pid=1>

Trail Map: <https://tinyurl.com/SilverFallsTrailMap>



(Photo credits (L-R): Doug Olupski & Drew Smith)

SPECIAL GUIDED FIELD TRIP



Bush's Pasture Park & Deepwood Estate Native Plant Walk

Sunday, May 31 | 8:00-9:30 am

Start/End Location: East side of the [Mission Street Parking Area](#)

In the 1990s, a stranger knocked on John Savage's door with an unexpected gift: an aging herbarium featuring native plant species found in Bush's Pasture Park around the turn of the last century.

As the President of the NPSO Willamette Valley Chapter and a frequent visitor to the park, John has been keenly interested in the botanical history of this much-loved Salem natural area. In leafing through the pages of the herbarium, what he found surprised him: native species that had not been seen at the park in recent memory. This book of pressed plants was a botanical time capsule.

Round out your Annual Meeting experience with an easygoing guided walk through Bush's Pasture Park and the botanical gardens at Deepwood Estate to identify native plants currently found at these sites and learn about municipal management practices that have impacted several iconic native species. Or choose one or both walks for a self-guided experience on Friday or Sunday.

Visit [Deepwood Museum & Gardens](#) for information regarding tours of this historic house (not included in the guided or self-guided walk).

Visit [Bush House Museum](#) for information regarding tours of this historic house and adjacent conservatory (not included in the guided or self-guided plant walk). Bush House Museum is open for tours on Friday, May 29.

► *This special guided trip does not need to be ranked. Please RSVP on the Annual Meeting registration form.*

Distance: 1 mile; see the map for self-guided routes

Elevation: Flat | **Hike Rating:** Easy

Address: [600 Mission St SE, Salem, OR 97302](#)

Map: <https://tinyurl.com/BushsPastureParkMap1>

Plant List: <https://tinyurl.com/BushParkPlantList1>



FIELD TRIPS, WORKSHOPS & NATURE TALKS AT-A-GLANCE

Please rank the Saturday guided field trips, nature talks, and workshops on the field trip ranking form. Self-guided trips do not need to be ranked and no advance sign-up is required.

Self-Guided Field Trips (Friday, May 29)		Leaders	Times	Rating	Distance	Fees	Notes
SG 1	Minto-Brown Island Park & Conservation Area	N/a	Choose your time	Easy	Variable	N/a	Walking & biking trails
SG 2	Silver Falls, Smith Creek Loop	N/a	See above	Moderate	9 miles	\$10 parking fee	No fee for overnight guests
SG 3	Silver Falls, Buck Mountain Loop	N/a	See above	Moderate	8.1 miles	\$10 parking fee	No fee for overnight guests
SG 4	Silver Falls, Howard Creek Loop	N/a	See above	Easy-moderate	3.4 miles**	\$10 parking fee	No fee for overnight guests
SG 5	Silver Falls, South Falls Campground Nature Loop	N/a	See above	Easy	1.2 miles	\$10 parking fee	No fee for overnight guests
SG 6	Silver Falls, Trail of Ten Falls	N/a	See above	Moderate-strenuous	5 miles*	\$10 parking fee	No fee for overnight guests
SG 7	Deepwood Museum & Estate	N/a	See above	Easy	Variable	N/a	Fee for historic house tour
SG 8	Bush's Pasture Park	N/a	See above	Easy	Variable	N/a	Fee for historic house tour

*This hike has been modified due to recent trail closures. Check the link for updates before departing.

** Refer to the trip description for additional information

Guided Field Trips (Saturday, May 30)		Leaders	Times	Rating	Distance	Fees	Notes
Full-day Field Trips							
G 1	Silver Falls - North Fork Silver Creek/North Canyon Vernal Wet Meadow Hike	Matt Palmquist	8:00 am - 4:00 pm	Easy-moderate	4 miles	\$10 parking fee	No fee for overnight guests
G 2	Kingston Prairie & Bird Haven Tree Conservancy Tour	John Savage, Jim Bayuk & Jan Irene Miller	See above	Easy	2 miles	N/a	
G 3	Cascade Head Hike	Kevin Calvert	See above	Moderate-strenuous	4.2 miles	N/a	
G 4	Shellburg Falls Hike	Sarah Hamilton	See above	Easy	3.5 miles	N/a	
G 5	Horse Rock Ridge Hike	Bobbie Snead	See above	Easy-moderate	3.2 miles**	N/a	
G 6	Herbert Farm & Natural Area Tour	Sara Alaica	See above	Easy	2.5 miles	N/a	

** Refer to the trip description for additional information

Half-day Field Trips		Leaders	Times	Rating	Distance	Fees	Notes
G 7	The Oregon Garden Tour	Roseanne Yoder, Kassi Roosth & Jeremy Ojua	8:00 am - 1:00 pm	Easy	1+ miles	N/a	
G 8	Heritage Seedlings Tour	Linda Boyer	See above	Easy	1 mile	N/a	
G 9	Baskett Slough Walk	Aislinn Adams	See above	Easy-moderate	2.5 miles	N/a	
G 10	Delbert Hunter Arboretum Tour	Diane Highberger & Pam Wetzal	See above	Easy	1 mile	N/a	
G 11	Oak Meadows Natural Area Tour	Travis Williams	See above	Easy	1.5 miles	N/a	
G 12	Willamette University @ Zena Forest Tour	Weston Miller and Willamette Students	See above	Easy*	1.5 miles	N/a	

Nature Talks (Saturday Afternoon, May 30)		Presenters	Times	Rating	Distance	Fees	Notes
NT 1	"Plants, People & Common Ground"	Jeremy Ojua, Grand Ronde Nursery, & Rose Grimson, Willamette University	2:00-3:00 pm	N/a	N/a	N/a	Card Room, WHC
NT 2	"On the Search for Oregon's Castilleja Species"	Ed Cope, Coos Watershed Association	3:00-4:15 pm	N/a	N/a	N/a	Card Room, WHC

Workshops (Saturday Afternoon, May 30)		Instructors	Times	Rating	Distance	Fees	Notes
W 1	Native Plant Morphology Workshop	Steven Yeager, Executive Vice President, Mountain Rose Herbs	1:00-4:00 pm	Easy	>1 mile	N/a	Ankeny Nature Center
W 2	Microwave Plant Pressing Workshop	James Anello, Confederated Tribes of Siletz Indians	2:00-4:00 pm	N/a	N/a	N/a	Spinning Room, WHC

Guided & Self-Guided Walks (Sunday, May 31)		Leaders	Times	Rating	Distance	Fees	Notes
G 13	Deepwood Estate & Bush's Pasture Park	John Savage, NPSO Willamette Valley Chapter President	8:00-9:30 am	Easy	1 mile	N/a	RSVP on registration form

The Friday self-guided field trip options will repeat on Sunday. Check the Friday self-guided field trips (above) for locations, parking fees, and other information.