

Bulletin of the  
**NATIVE PLANT SOCIETY  
OF OREGON**

Dedicated to the enjoyment, conservation, and study  
of Oregon's native vegetation

VOLUME 24

NUMBER 1

JANUARY 1991

ISSN 0884-599

## CHAPTER NEWS

### IMPORTANT NOTE TO FIELD TRIP PARTICIPANTS

Field trips take place rain or shine, so proper dress and footwear are essential. Trips may be strenuous and/or hazardous. Please contact the trip leader for information about difficulty, mileage, and terrain. Participation is at your own risk. Bring water and lunch. All NPSO activities are open to the public at no charge (other than carpool mileage), and friends, newcomers and visitors are always welcome.

Notice to field trip chairs and leaders: The Forest Service and other Federal agencies have set policies limiting group size in wilderness areas to 12. The reason for this is to limit the human impact on these fragile areas. As we are often in the position of asking them to follow their rules and regulations for conservation of our natural resources, it's time for us to do the same. Each group using wilderness must be no larger than 12.

### Blue Mountain

7 Jan., Mon.

MEETING. 7:30pm in Room 130, Morrow Hall, BMCC. Marilyn Cripe will present her slide show from her latest travels in Venezuela and Peru.

### Corvallis

14 Jan., Mon.

MEETING. 7:30pm at the Herbarium Library (Room 4083 Cordley Hall, OSU). Our guest speaker will be Dr. Peter McEvoy speaking on the "Ecology and Biological Control of Invading Species".

### Emerald

14 Jan., Mon.

MEETING. 7pm at Westmoreland Community Center, 1545 W. 22nd. Terri Jones will speak on "Non-forested Wetlands of the Willamette National Forest".

19 Jan., Sat.

FIELD TRIP Ever been at a loss naming that oh so familiar looking shrub or tree without its summer foliage? Join Rhoda Love for a short day of winter tree and shrub ID at Mt. Pisgah arboretum. Twig keys will be provided. Depart from the South Eugene High School parking lot at 10am. Bring handlens and pocket knife. For more info call Rhoda Love (345-6241).

16 Feb., Sat.

FIELD TRIP. Join Dave Wagner for a study of the lush diversity of bryophytes and ferns within the mist-shrouded conifers of Fall Creek. Learn the common mosses, lichens, and liverworts of this magnificent forest. Depart from the South Eugene High School parking lot at 9:30am. Bring lunch, handlens. For more info call Dave Wagner (346-3033).

### High Desert

For information, call Bill Hopkins (388-7434).

### Mid-Columbia

2 Jan., Wed.

MEETING. 7:30pm at the Mosier School. Jerry Igo will present his latest video production "Seasons in the Gorge", postponed from December.

6 Feb., Wed.

MEETING. 7:30pm at the Mosier School. Mary Jean Sargent will present "Wildflowering in Western Australia", a selection of slides from her last visit there.

## North Coast

---

### Portland

8 Jan., Tue.

For information, call Sallie Jacobsen (842-4350).

**MEETING.** 7pm at First United Methodist Church, 1838 SW Jefferson St., Portland. "I apology for straying from the normal practice of having slides specifically on native plants. This month we will be getting back on track with George Lewis. He will be showing slides on a single plant family thru May 1991. Our meeting programs will be based on plant familys or plant ecosystems."

---Tom Cherick Jr., 1st Vice President.

**TURN TO** the article on page 4 about Portland's important Lecture Series this February.

### Siskiyou

10 Jan., Thurs.

**MEETING.** 7:30pm in Room 171 of the Science Bldg. at Southern Oregon State College. Dr. Darlene Southworth, professor of biology at SOSOC will speak on *Limnanthes* as a new crop for Oregon based on the study of embryo culture and seed selection for high oil content.

## South Coast

---

For information on formation of this pending chapter, contact Jim Curran (396-4939).

### Umpqua Valley

10 January, Thur.

**MEETING.** 7pm, Room 131, Douglas County Courthouse, Roseburg, Oregon. 1990 botany programs on the Umpqua National Forest and the Roseburg district BLM. Plant ID sketch of broadleaved evergreens, field trip reports.

12 January, Sat.

**FIELD TRIP.** Examine different plant communities around Irwin Rock out Ten Mile off Hwy 42. Meet 8am in the BLM parking lot, 777 Garden Valley Rd., Roseburg. Leader: Richard Sommer (673-3709).

### Willamette Valley

21 Jan., Mon.

**MEETING.** 7pm at First United Methodist Church, Room 225, 600 State St., Salem. "Favorite Flower Slides and UFO Night". Members are encouraged to bring their own favorite slides in additon to slides of any unidentified flowering objects. Refreshments provided.

### William Cusick

---

For information, contact Karen Antell (963-0267).

---

## STATE BOARD TO MEET JAN. 26TH

Ever wonder how the Native Plant Society of Oregon manages its diverse statewide activities? Your next chance to see our far-flung State Board organization in action is January 26th. All NPSO Board meetings are open to the public and members are encouraged to attend and participate. The meeting will be at 10am at OSU in Room 2087 at Cordley Hall (On Orchard Ave. between 27th and 30th, across from Oceanography). Bring a sack lunch; beverages and snacks will be supplied.

Please send AGENDA ITEMS to President Stephanie Schulz by Jan. 10th.

The voting members of the State Board of the NPSO include State Officers, Chapter Presidents, and the Directors of the organization. The number on the State Board varies but currently is 22. A quorum is needed at each meeting to conduct business. Each Board member has a report to make on the activities they direct or oversee, as do all state committee chairs. In an organization such as ours communications are essential in carrying out our purposes and in reaching our goals. Attendance by all Board members is needed to assure the clearest communications possible within our organization. If Board members or committee chairs cannot attend, they should either send a representative or submit a written report to the secretary before the meeting.

## 1991 "WISE USE OF NATIVE PLANTS" AWARDS PROGRAM

The Native Plant Society of Oregon is requesting entries and nominations for the 1991 "Wise Use of Native Plants" Award. Entries can be made in any of the six following categories:

- 1) Restoration, rehabilitation or enhancement of native plant sites.
- 2) Sensitive or innovative management of native plant sites.
- 3) New designed sites/gardens using native plants.
- 4) Outstanding achievements in propagation or production of native plants.
- 5) Outstanding research, education or writing regarding the conservation, restoration, propagation and wise use of native plants.
- 6) Outstanding partnerships or cooperative ventures to promote the wise use and propagation of native plants.

---

### NPSO: A HISTORY

In 1991 our Society celebrates its 30th birthday. It seems fitting that we observe this occasion by collecting the stories of our founding and growth. This collection will be published in either the NPSO *Bulletin* or *Kalmiopsis*. We will try to document the history of the Society as a whole and of each chapter. I will serve as coordinator of this project.

Each chapter should send me a written history of the founding of the chapter. Topics such as who were the organizers, when did it occur, who were the first officers, and any interesting stories surrounding our beginnings are encouraged. The amusing things that happened and the human interest anecdotes are what makes our saga even more readable. I'd like each chapter president to take the responsibility of collecting this information or delegating it to an interested member.

I would also like each charter member of the original Portland Chapter founding in 1961 to send me their recollection. I need to receive this information over the next month or two. Please call me for questions or comments.

---Stu Garrett  
1501 NE Med Center Dr.,  
Bend OR 97701  
(389-6981 eves)

Judging will be done by a committee approved by our president, Stephanie Schultz. Evaluations will be based on ethical plant sources, ecological fitness or appropriateness for a site, success rates, creativity, understandability and accessibility, as appropriate to the entry.

Nomination forms can be obtained by writing or calling Kathy Schutt at 1880 W. Nob Hill St., SE, Salem, OR 97302. Final entries must be post-marked by January 31st. The awards will be given at the February Cascadia Conference in Portland.

---Kathy Schutt, Willamette Valley Chapter

---

### NO MOO AT MOUNT PISGAH TOO?

Cattle may be moving off Rooster Rock State Park but they are still out at Buford Park a 2235 acre public park in Land County outside Eugene. Bob Keefer, the new County Parks director, recently agreed to conduct the first resource inventory there since the Park was established 17 years ago, including a study of botanical values.

A large population of federally endangered *Lomatium bradshawii* was found at the park and fenced off in June, 1990. *Aster vialis* is known to occur on the summit of Mount Pisgah, where it is doing poorly due to browsing. *Mimulus cardinalis* is only known from riparian zone herbarium records, from collections in the 1970's by Georgia Mason. Most intriguing is the northernmost surviving community of the shrub *Ceanothus cuneatus*: Will wildflowers in the understory mimic those found in this association further to the south?

Restoration could be possible if Lane County halts the grazing when the lease extension expires June 30th. The challenges are similar to those at Bald Hill in Corvallis: a huge seed bank of exotic annuual grasses and vexations populations of blackberry, thistle, poison oak, tansy, and Scotch broom in areas of cattle disturbance. Volunteers are needed this spring for the plant inventory!!! If interested, please contact:

---Tom Pringle  
Emerald chapter  
POB3429, Eugene 97403 (484-0669)

## NPSO 1991 ANNUAL MEETING, JUNE 14-16: MONTHLY UPDATE

ANNUAL MEETING PLANS: Emerald Chapter members under the direction of Charlene Simpson, Annual Meeting Chair, are hard at work on plans for NPSO's big 30th Birthday Annual Meeting in Eugene. We hope that you put the dates Friday, Saturday and Sunday, June 14, 15 and 16 on your calendars as soon as you saw our first notice in your December *Bulletin*. If you didn't please do that now.

REGISTRATION MATERIALS: We had promised to include registration materials in this January *Bulletin*, but we need a bit longer to prepare the forms. Look for registration forms early in 1991. Meanwhile, make plans to attend.

SATURDAY NIGHT BANQUET SPEAKER: Dr. Linda R. McMahan, Executive Director of Portland's Berry Botanic Garden will be our speaker. Her topic will be "Conserving Plant Diversity: Challenge for the 90's." You will all want to hear Dr. McMahan address a topic on which she is a recognized global expert.

POSTER SESSION: Something New! Emerald Chapter asks that each Chapter bring one or more posters for a Saturday night pre-banquet Poster Session. Emerald Chapter suggests the following as possible poster topics: History of your chapter, R and E plants of your region, one or more chapter activities, an important chapter conservation project, one or more chapter field trips, or any other topic of your choice. Chapters are not limited to a single poster. Hopefully, posters will include photos, perhaps maps, and explanatory and/or educational material. Your posters can later be used at flower shows, fairs, celebrations and other activities in which your chapter takes part. Please show the NPSO 30th Birthday spirit and join in this new NPSO activity.

Questions? Look for more Annual Meeting information in the February *Bulletin*. For information about the poster session, call Rhoda Love, 345-6241. If you have general Annual Meeting questions, please call Charlene Simpson, 465-1059, or Jenny Dimling, 343-3242. See you all in Eugene in June!

---Rhoda Love,  
Emerald Chapter  
State Conservation Co-Chair

## LECTURE SERIES TO BE BROADLY SPONSORED

The Portland Chapter, along with Berry Botanic Garden, Leach Botanic Garden, Portland Arboretum, Audubon, Metro, and the World Forestry Center, are all sponsoring a series of four lectures. These will take place on consecutive Wednesday beginning February 6, 1991. Each will cover a separate but related topic. The first will be an introduction to the global (and local) problems which are leading to losses in animal and plant diversity and ecosystems. The second will discuss animal and wetland species. The third will have a panel describing Metro green-spaces and creative ongoing programs. The final lecture will present ways to work together to find solutions to our environmental problems.

Mark your calendars for these four evening lectures. They will give a good working knowledge of our environmental problems. This year these lectures will replace our usual workshops. More information will be in next month's *Bulletin*.



*Montia sibirica*  
Candyflower  
Drawn by Herm Fitz

From NPSO *Bulletin* Feb. '82

## NEIGHBORING NATIVE PLANT SOCIETIES

It is fun to look over our neighbor's fence and find out what's up. Almost all western states now have Native Plant Societies. All the states surrounding us have active ones. I'd like to tell you something about them and encourage your membership in them. Who knows, if we get to know one another well enough we may one day have "The Association of Western Native Plant Societies". (Rhoda Love, are you listening?)

### CALIFORNIA NATIVE PLANT SOCIETY

Our younger but much larger (8500 members in 28 chapters) cousin to the south is, in my opinion, what all NPS's should aspire to be. They are strong advocates for rare species and biological diversity. They have a full time staff and sponsor a diverse education program. Their high-quality journal, *Fremontia*, is superb and an inspiration for our own *Kalmiopsis*. Each chapter has its newsletter and there's a statewide monthly announcement bulletin for their incredible array of activities. I've enjoyed being a member of the Bristlecone Chapter of Bishop on the east side of the Sierras. This chapter covers desert and water issues well. To join the CNPS send \$18 to 909 12th St., Suite 116, Sacramento, CA 95814.

### WASHINGTON NATIVE PLANT SOCIETY

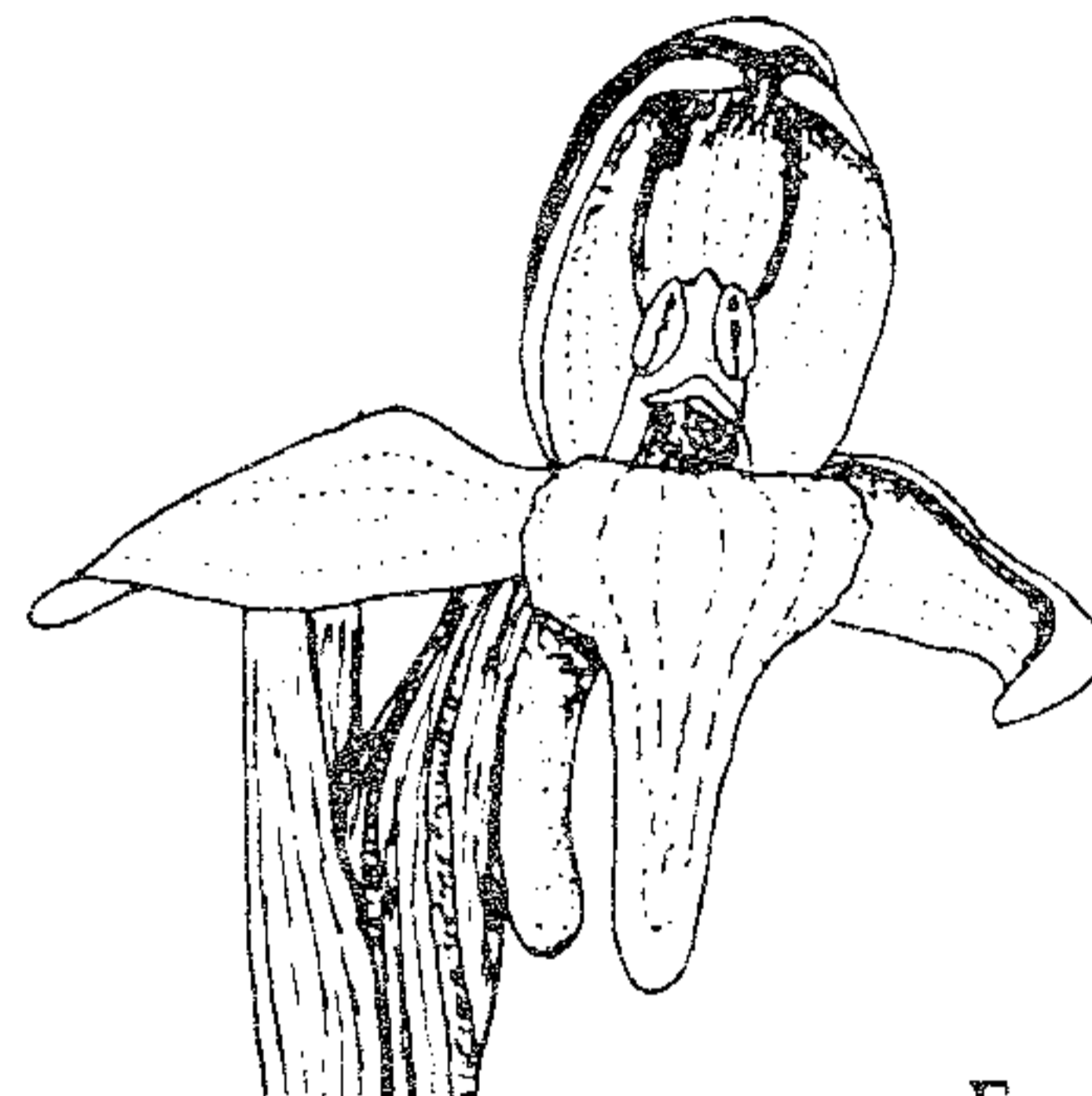
Our northern neighbors have nine chapters statewide. Their newsletter, *Douglasia*, is my favorite. Professor Art Krukeberg of UW edits it with erudition and a folksy style. His article selection is eclectic and always fascinating. He has a sense of humor and an occasional awful pun slips in. They are very involved in conservation issues, having served as the group mostly responsible for reducing exotic mountain goats who were eating rare species in Olympic National Park. The goats were captured and sent to Oregon's Blue Mountains! WNPS sponsors yearly Summer Study weekends and annual High Country Backpack. Send \$12 to WNPS, c/o Shelley Farber, 3625 Bagley Ave., N., Seattle, WA 98103, to join.

### IDAHO NATIVE PLANT SOCIETY

Idaho is a recent member of the NPS club. They have four chapters and over 300 members. *Sage Notes* is their state newsletter and covers items of interest for Eastern Oregonians also. Their most recent recounted successful efforts to promote RNA's on USFS land. They sponsor the Idaho Rare Plant Conference each spring. Dues are \$8 to INPS, POB 9451, Boise, 83707.

NORTHERN NEVADA NATIVE PLANT SOCIETY  
Headquartered in Reno, they have no other chapters. They are an active bunch with frequent fieldtrips and are involved with conservation issues. Lots of ethnobotany is included in their newsletter. They seem quite concerned about assuring nursery propagation for the native plant suppliers in their area. You can become a member and receive their monthly bulletin by sending \$7.50 to NNNPS, POB 8965, Reno, NV 89507.

---Stu Garret  
Eastside Conservation Chair  
Immediate Past President



*Habenaria dilitata*  
Boreal bod orchid  
Drawn by Herm Fitz

From NPSO *Bulletin* Apr. '80

## FIELD TRIP REPORT

The NPSO *Bulletin* said, "Explore Douglas County plant diversity". 11 people met at 8am at the BLM in Roseburg, then went east on Hwy 138 to Colliding Rivers, the old Glide Ranger Station, where we picked up guide Jack Price, district ranger retired, who gave us a quick tour of the arboretum, looking askance at exotics the Glide Garden Club planted. Saw native *Cercocarpus* sp., then east to Twin Lakes roadhead, 1.25 mile by trail to lake at 5000' S29T27R2E. Snow here and there. In a cool north-facing debris fan near the lake there was a grove of *Chamaecyparis nootkatensis* with little ones around. Lunch on the rocks. Down the trail to roadhead and out with stop by Weeping Rocks at Marsters Bridge to see a petrified standing tree in roadcut. What is it? On home with another tour of Glide arboretum to see *Cupressus arizonica*, *Cedrus libani*, and *Umbellularia californica*.

---Richard H Sommer, President  
Umpqua Valley Chapter, NPSO

## IT IS PAST TIME FOR THE US FISH & WILDLIFE SERVICE TO LIST OUR ENDANGERED APPLGATE'S MILKVETCH

It is time for Native Plant Society of Oregon members to express concern about our very rare Applegate's milkvetch, *Astragalus applegatei*. This plant has been waiting for Federal Listing as Endangered for a decade now. We have learned that the listing package was sent to the Portland office of the U. S. Fish and Wildlife Service from the Boise Field Station in April, 1989 -- almost 2 years ago. We understand that the Portland office is reviewing the proposed rule to list *Astragalus applegatei*, but has not yet submitted it to the Regional Solicitor's office. We want to encourage them to do this without further delay.

As Bulletin readers know, Oregon was one of the first states in the U. S. to complete a truly comprehensive list of its rare plants. The list contains approximately a hundred species that are in danger of becoming extinct if they do not receive the careful management considerations that Federal listing insures. We Oregonians know that in the continental United States, only California and Florida have a greater percentage of their flora in danger of extinction. It has been 18 years since the passage of the Federal Endangered Species Act of 1973, but in that time, only 3 of Oregon's nearly 100 threatened plants have received federal listing. That is 6 years per plant. At that rate it will take 600 years for Oregon's rare plants to receive protection! The last plant to receive federal protection in Oregon was *Lomatium bradshawii* which was listed in October, 1988 --over 2 years ago. Unless the speed of listing increases to at least several plants per year, Oregon's fragile flora will be decimated before the Federal Government takes the necessary steps to protect it.

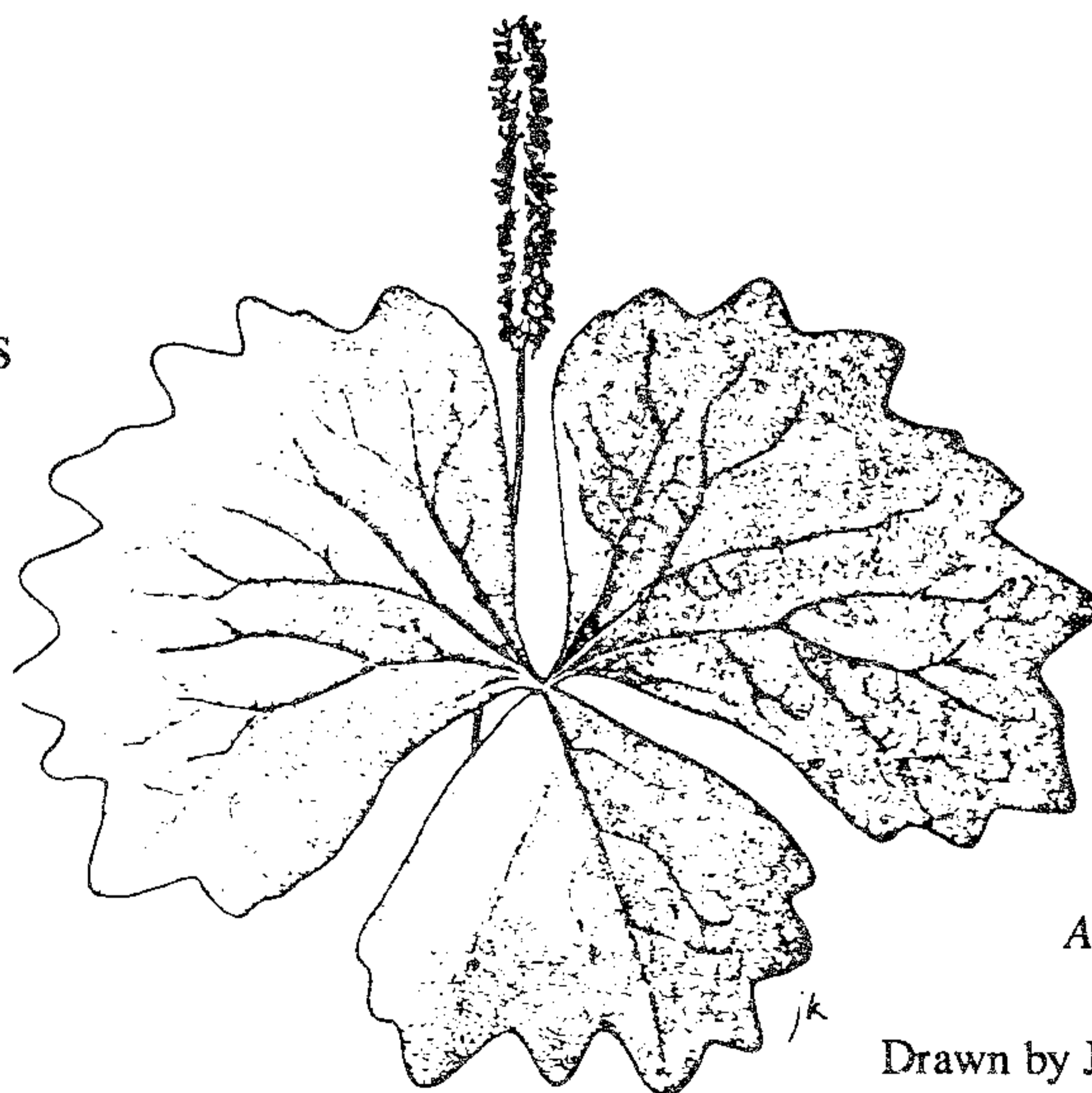
*Astragalus applegatei* is a plant of moist meadows in southern Klamath County. Presumably due to draining, agriculture and other anthropogenic changes to its habitat, the species' range has grown smaller so that the plant is now reduced to one reasonably-sized population inside the town of Klamath Falls and two tiny, and perhaps non-viable patches on the Miller Island Wildlife Management Area (WMA). If it could receive immediate federal protection, seed could be collected from the Klamath Falls population, and a management program could be undertaken to reintroduce the species to suitable habitat on the WMA and elsewhere in Klamath County. However, speed is of the essence, as the Klamath

Falls patch is under threat of development and without this seed source, it is virtually certain that *Astragalus applegatei* faces extinction. It was officially listed as Endangered by the State of Oregon on October 27, 1989.

*Astragalus applegatei* was discovered by long-time Willamette University botanist, Morton E. Peck, in the early-1930's and named for his friend and collecting partner, Elmer Ivan Applegate, member of the famous Oregon pioneer Applegate family. Peck published a description of the new milkvetch in the *Proceedings of the Biological Society of Washington* in 1936. With the passage of the Federal Endangered Species Act in 1973, plant records were searched in Oregon and it was discovered that no botanist had formally reported seeing Applegate's milkvetch since 1931. The plant was then searched for in Klamath County, and a few tiny patches were found. Unfortunately, these have been shrinking in size in the decade that this plant has been waiting for listing.

Time has almost run out for *Astragalus applegatei*. Please let the U. S. Fish and Wildlife Service, 1002 NE Holladay Street, Portland, 97232, know that as members of the NPSO, we hope to see *Astragalus applegatei* receive federal listing without further delay. Please send copies of your letters to Senators Hatfield and Packwood, and to your U.S. Representatives.

---Rhoda Love,  
Emerald Chapter  
State Conservation Co-Chair



*Achyls triphylla*  
Moose Plant  
Drawn by Julie Kierstead

